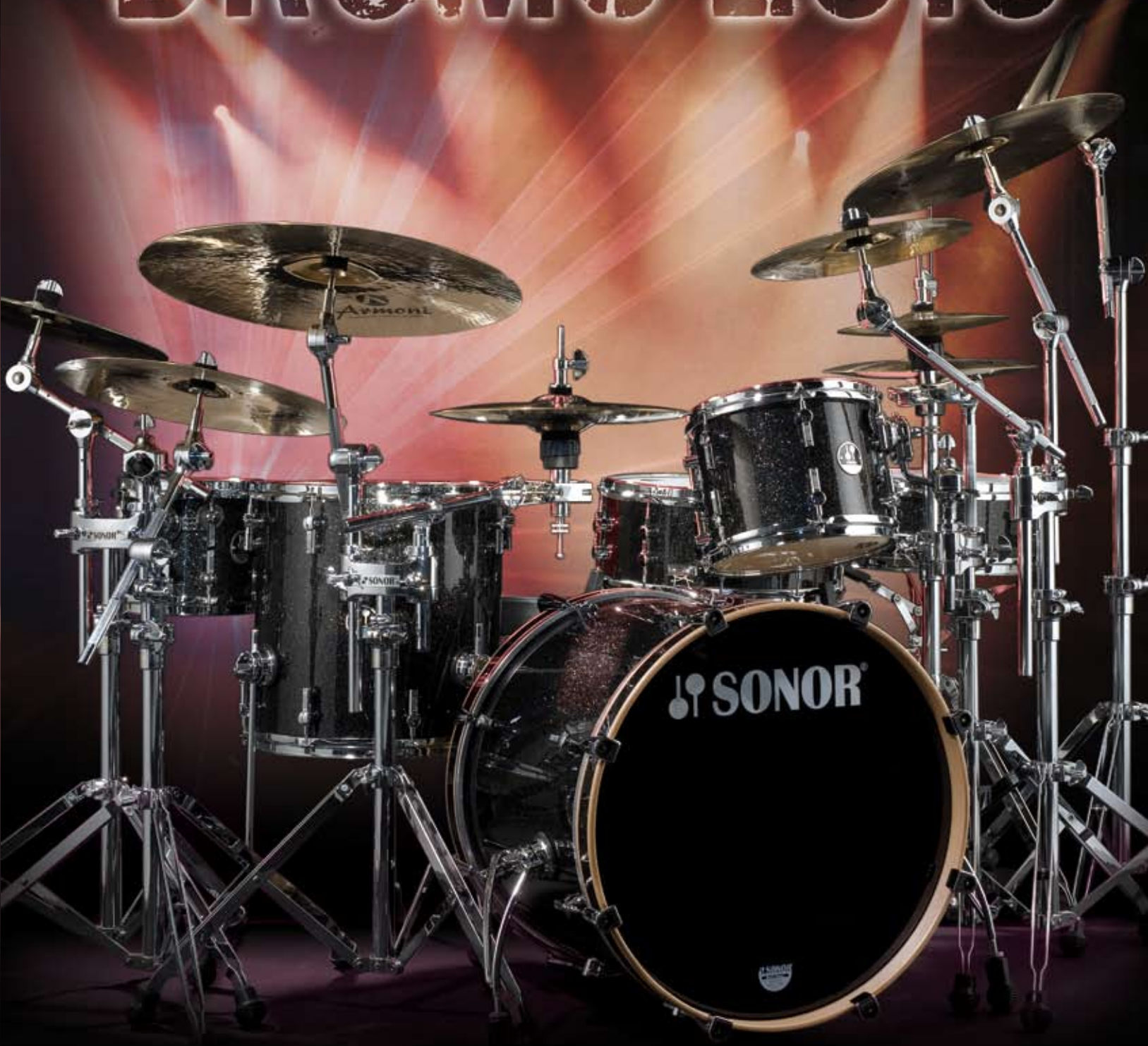


WWW.SONOR.COM

 **SONOR**<sup>®</sup>

THE DRUMMER'S DRUM

# DRUMS 2010



# SONOR DRUMS

## WELCOME

# CONTENTS

Why has SONOR been making drums of the highest quality, instruments unrivalled in their class, for more than 130 years?

**> The answer is you!**

You and the world wide drum community, who for decades have relied on the outstanding quality and sound of SONOR drums.

Welcome to SONOR drums. With the aid of this catalog, get a glimpse into our unique sound. On the pages that follow, learn everything about SONOR's sounds, designs, colors and innovations of our six drum series...

Get to know our drums and find the drum set that's right for you.

Have fun browsing through this catalog and dreaming up your own custom SONOR drum set and sound.

**> Your SONOR drum team**



**Drum Series**

Delite ..... 04  
 S Classix ..... 16  
 Force 3007 ..... 28  
 Force 2007 ..... 36  
 Force 1007 ..... 44  
 Force 507 ..... 46

Artist Series Snare Drums ..... 50  
 Signature Series Snare Drums ..... 54  
 Delite, S Classix and Force Snare Drums ..... 58  
 SoundWire ..... 61

**Hardware Series**

Giant Step Bass Drum Pedals ..... 62  
 Bass Drum Pedals ..... 66  
 600 Hardware ..... 68  
 600 Hardware Basic Arm System ..... 72  
 400 Hardware ..... 76  
 200 Hardware ..... 78  
 Hardware Sets ..... 79

Accessories ..... 80  
 Drumheads / Drumsticks ..... 82  
 Global Bags / Drum Cases ..... 84  
 Armoni Cymbals ..... 86  
 Cast B8 Cymbals ..... 90

THE RELIABLE, PROFESSIONAL SET FOR OPEN SOUNDS FULL OF ENERGY

# DELITE SERIES



### SONOR Delite Maple Shell Design

Extra thin full maple shells crafted of North American maple with reinforcing rings (SONOR Vintage model). Shells deliver maximum strength, perfect curving and neutral tuning, thanks to the tension-free cross lamination of individual layers of wood (CLTF Cross Laminated Tension Free Process).

### SONOR Delite Shell Thicknesses

9 layers for tom toms, floor toms and snare drums =  
4 mm + 2 mm Dynamic Edge reinforcement rings at the edge of the shells  
12 layers for bass drums =  
6 mm + 2 mm Dynamic Edge reinforcement rings at the edge of the shells



The SONOR Delite Series is designed for the professional drummer with discerning ideas about equipment, features and sounds. These ideas and experiences, along with the broad expertise at SONOR, are our main focus as we continue to develop the SONOR Delite Series. The shell design, with its extremely thin and very light vintage maple shells, makes a SONOR Delite set an extremely welcome touring companion no drummer would be without.

### SONOR Delite Sounds

The trademark of the SONOR Delite Series is the range provided by the extremely thin vintage maple shells. Innovative shell design gives each SONOR Delite set an unmistakably open sound and enormously wide range suited to all styles of music. The sound of the individual shells is characterized by a soft, warm tone — highlighting the lower pitches and providing balance in the mid-range and treble.



### Tom Mounting System – Powerful Sounds Thanks to Minimal Shell Contact!

The vibration-free T.A.R. system (*Total Acoustic Resonance*) with APS provides maximum resonance and sustain.

### APS – Advanced Projection System

The SONOR tom mounting system, the bass drum bracket, bass drum and floor tom legs come equipped with special APS rubber insulators that prevent direct contact between the metal parts and wooden shells. This gives the drums a more dynamic and precise sound.



### Bass Drum Bracket – It's Yours to Decide!

The standard Delite Series bass drum ships without a bracket. Optional bracket is available.

### Power Hoops – Clean Tuning and Crisp Attack!

2.3 mm SONOR Power Hoops on all tom toms and floor toms. 14" snare drums are equipped with chrome-plated die-cast hoop rims.



### Bass Drum Claws – Protect Your Rims!

Rubber padding beneath the bass drum claws protects the wooden rim against damage.



### Bass Drum Spurs – Quick and Easy Set-Up!

Position clamps (Memory Locks) 'remember' your preferred bass drum spur height.



### Bass Drum Legs – On Solid Footing, Everywhere You Go!

The bass drum legs can be turned around so they rest on either the rubber or the metal end. Adjustable with a fastening screw.



### Tuning Lugs with TuneSafe – Right in Tune, 100% of the Time!

All SONOR lugs are equipped with the TuneSafe tuning-safeguard feature, which prevents tension screws from loosening during hard rim shots or where batter heads have been loosely tuned. The new square tension screws with fine-pitch threads guarantee optimum tunability. Slotted tension screws with fine-pitch threads are still available.

### Batter and Resonance Heads – Made by REMO USA

- Tom Tom: SONOR Clear Medium
- Snare Drum: SONOR White Medium  
SONOR Clear Medium Resonance
- Bass Drum: SONOR Clear Power
- Bass Drum Front Heads:
- For Covering Color Surfaces:  
SONOR Power Black with white SONOR logo
- For Natural Wood Surfaces:  
SONOR Power White with black SONOR logo



# DELITE SERIES



Photo: Christopher Otazo

**Delite Set in 11255 Brilliant Black** >

<b>DL 2217 BD</b>	Bass Drum*	22" x 17.5"
<b>DL 1209 TT</b>	Tom Tom	12" x 9"
<b>DL 1310 TT</b>	Tom Tom	13" x 10"
<b>DL 1616 FT</b>	Floor Tom	16" x 16"
<b>DL 1405 SDWD</b>	Snare Drum	14" x 5"

**Hardware**

<b>DTH 475</b>	Double Tom Holder
<b>SS 677 MC</b>	Snare Drum Stand
<b>HH 674 MC</b>	Hi-Hat Stand
<b>CBS 672 MC</b>	Cymbal Boom Stand (3x)
<b>SP 673</b>	Bass Drum Single Pedal
<b>DT 670</b>	Drummer's Throne, round seat

\*with Bass Drum Bracket



**Delite Set in 30001 Walnut Roots**

<b>DL 2217 BD NM</b>	Bass Drum	22" x 17.5"
<b>DL 1406 SDWD</b>	Snare Drum	14" x 6"
<b>DL 1008 TT</b>	Tom Tom	10" x 8"
<b>DL 1209 TT</b>	Tom Tom	12" x 9"
<b>DL 1414 FT</b>	Floor Tom	14" x 14"
<b>DL 1616 FT</b>	Floor Tom	16" x 16"

**Hardware**

<b>DTS 475</b>	Double Tom Stand
<b>SS 677 MC</b>	Snare Drum Stand
<b>HH 674 MC</b>	Hi-Hat Stand
<b>CBS 672 MC</b>	Cymbal Boom Stand (2x)
<b>MBS 473</b>	Mini Boom Stand (3x)
<b>SP 673</b>	Bass Drum Single Pedal
<b>DT 670</b>	Drummer's Throne, round seat

< **Delite Set in 11254 Birdseye Amber**

<b>DL 2017 BD</b>	Bass Drum*	20" x 17.5"
<b>DL 1009 TT</b>	Tom Tom	10" x 8"
<b>DL 1210 TT</b>	Tom Tom	12" x 9"
<b>DL 1414 FT</b>	Floor Tom	14" x 14"
<b>DL 1404 SDWD</b>	Snare Drum	14" x 4.25"

**Hardware**

<b>DTH 475</b>	Double Tom Holder
<b>SS 677 MC</b>	Snare Drum Stand
<b>HH 674 MC</b>	Hi-Hat Stand
<b>CBS 672 MC</b>	Cymbal Boom Stand (3x)
<b>MBS 473</b>	Mini Boom Stand (2x)
<b>DP 672</b>	Bass Drum Double Pedal

\*with Bass Drum Bracket



# DELITE SERIES



< Delite Set in 11259 Brown Fade

<b>DL 2417 BD NM</b>	Bass Drum	24" x 17.5"
<b>DL 1406 SDWD</b>	Snare Drum	14" x 6"
<b>DL 1310 TT</b>	Tom Tom	13" x 10"
<b>DL 1616 FT</b>	Floor Tom	16" x 16"
<b>DL 1816 FT</b>	Floor Tom	18" x 16"
<b>Hardware</b>		
<b>CTS 679 MC</b>	Cymbal Tom Stand	
<b>SS 677 MC</b>	Snare Drum Stand	
<b>HH 674 MC</b>	Hi-Hat Stand	
<b>CBS 672 MC</b>	Cymbal Boom Stand	
<b>DCS 678 MC</b>	Double Cymbal Stand	
<b>SP 673</b>	Bass Drum Single Pedal	

Delite Set in 11256 Birdseye Azure

<b>DL 2217 BD NM</b>	Bass Drum	22" x 17.5"
<b>DL 1406 SDWD</b>	Snare Drum	14" x 6"
<b>DL 1008 TT</b>	Tom Tom	10" x 8"
<b>DL 1209 FT</b>	Floor Tom	12" x 9"
<b>DL 1616 FT</b>	Floor Tom	16" x 16"

Hardware

<b>CTS 679 MC</b>	Cymbal Tom Stand (2x)
<b>SS 677 MC</b>	Snare Drum Stand
<b>HH 684 MC</b>	Hi-Hat Stand
<b>XH 674</b>	X-Hat
<b>DT 670</b>	Drummer's Throne, round seat
<b>GDPR 3</b>	Giant Step Double Pedal, right

Basic Arm System Components

<b>BA19 - BSS MC</b>	BA19 - Basic Single Stand
<b>BA19 - BDS MC</b>	BA19 - Basic Double Stand
<b>BA19 - BR</b>	BA19 - Basic Ratchet
<b>BA19 - M MC</b>	BA19 - Basic Arm 19, medium
<b>BR12 MC</b>	BA12 - Basic Rack (2 x)
<b>BA12 - BR</b>	BA12 - Basic Ratchet (5x)
<b>BA - BC</b>	BA - Basic Clamp (2 x)
<b>BA - CH</b>	BA - Cymbal Holder (5x)

Delite Set in 11258 Birdseye Cherry >

<b>DL 2017 BD</b>	Bass Drum*	20" x 17.5"
<b>DL 1405 SDBD</b>	Snare Drum	14" x 5"
<b>DL 1209 TT</b>	Tom Tom	12" x 9"
<b>DL 1414 FT</b>	Floor Tom	14" x 14"
<b>Hardware</b>		
<b>STH 474</b>	Single Tom Holder	
<b>SS 677 MC</b>	Snare Drum Stand	
<b>HH 674 MC</b>	Hi-Hat Stand	
<b>CBS 672 MC</b>	Cymbal Boom Stand (2x)	
<b>SP 673</b>	Bass Drum Single Pedal	
<b>DT 670</b>	Drummer's Throne, round seat	
	*with Bass Drum Bracket	



# DELITE SERIES



**Delite Set in 11262 Bright Copper Sparkle**

<b>DL 2217 BD</b>	Bass Drum*	22" x 17.5"
<b>DL 2217 BD</b>	Bass Drum*	22" x 17.5"
<b>DL 1405 SDWD</b>	Snare Drum	14" x 5"
<b>DL 1008 TT</b>	Tom Tom	10" x 8"
<b>DL 1209 TT</b>	Tom Tom	12" x 9"
<b>DL 1310 TT</b>	Tom Tom	13" x 10"
<b>DL 1412 TT</b>	Tom Tom	14" x 12"
<b>DL 1616 FT</b>	Floor Tom	16" x 16"

\*with Bass Drum Bracket

**Hardware**

<b>DTH 675 MC</b>	Double Tom Holder (2x)
<b>SS 677 MC</b>	Snare Drum Stand
<b>HH 674 MC</b>	Hi-Hat Stand
<b>CBS 672 MC</b>	Cymbal Boom Stand (3x)
<b>DCS 678 MC</b>	Double Cymbal Stand
<b>SP 673</b>	Bass Drum Single Pedal (2x)
<b>DT 670</b>	Drummer's Throne, round seat

**Delite Set in 11257 Birdseye Sunburst**

<b>DL 2217 BD NM</b>	Bass Drum	22" x 17.5"
<b>DL 1816 BD NM</b>	Bass Drum	18" x 16"
<b>DL 1405 SDSD</b>	Snare Drum	14" x 5"
<b>DL 1205 SDW</b>	Snare Drum	12" x 5"
<b>DL 0807 TT</b>	Tom Tom	8" x 7"
<b>DL 1008 TT</b>	Tom Tom	10" x 8"
<b>DL 1209 TT</b>	Tom Tom	12" x 9"
<b>DL 1412 TT</b>	Tom Tom	14" x 12"
<b>DL 1614 TT</b>	Tom Tom	16" x 14"

**Hardware**

<b>DTS 475</b>	Double Tom Stand (3x)
<b>SS 677 MC</b>	Snare Drum Stand (2x)
<b>HH 674 MC</b>	Hi-Hat Stand
<b>CBS 672 MC</b>	Cymbal Boom Stand (2x)
<b>CBS 472</b>	Cymbal Boom Stand
<b>DCS 478</b>	Double Cymbal Stand
<b>MBS 473</b>	Mini Boom Stand (2x)
<b>XH 674</b>	X-Hat
<b>MH 475</b>	Multi Holder for X-Hat
<b>SP 673</b>	Bass Drum Single Pedal (2x)
<b>DT 670</b>	Drummer's Throne, round seat





Photo: Neal Burstyn

Photo: Heinz Kronberger

**Delite Set in 13016 Tiger Finish**

<b>DL 2217 BD NM</b>	Bass Drum	22" x 17.5"
<b>DL 1405 SDWD</b>	Snare Drum	14" x 5"
<b>DL 1208 TT</b>	Tom Tom	12" x 8"
<b>DL 1414 FT</b>	Floor Tom	14" x 14"
<b>DL 1616 FT</b>	Floor Tom	16" x 16"
<b>DL 1816 FT</b>	Floor Tom	18" x 16"

**Hardware**

<b>SS 677 MC</b>	Snare Drum Stand
<b>HH 684 MC</b>	Hi-Hat Stand Two-Leg
<b>CBS 672 MC</b>	Cymbal Boom Stand (2x)
<b>DCS 678 MC</b>	Double Cymbal Stand
<b>CTS 679 MC</b>	Cymbal Tom Stand
<b>SP 673</b>	Bass Drum Single Pedal
<b>DT 670</b>	Drummer's Throne, round seat

**Delite Set in 13018 Ebony**

<b>DL 2217 BD NM</b>	Bass Drum	22" x 17.5"
<b>DL 2217 BD NM</b>	Bass Drum	22" x 17.5"
<b>DL 1406 SDWD</b>	Snare Drum	14" x 6"
<b>DL 1008 TT</b>	Tom Tom	10" x 8"
<b>DL 1208 TT</b>	Tom Tom	12" x 8"
<b>DL 1414 FT</b>	Floor Tom	14" x 14"
<b>DL 1616 FT</b>	Floor Tom	16" x 16"

**Hardware**

<b>DTS 675 MC</b>	Double Tom Stand
<b>SS 677 MC</b>	Snare Drum Stand
<b>HH 684 MC</b>	Hi-Hat Stand Two-Leg
<b>XH 674</b>	X-Hat
<b>CBS 672 MC</b>	Cymbal Boom Stand (3x)
<b>CBA 671 MC</b>	Cymbal Boom Arm
<b>DCS 678 MC</b>	Double Cymbal Stand
<b>SP 673</b>	Bass Drum Single Pedal (2x)
<b>DT 670</b>	Drummer's Throne, round seat

**Basic Arm System Components**

<b>BA19-BDA</b>	BA19 - Bass Drum Adapter
<b>BA-CR</b>	BA - Connection Ratchet
<b>BA19-BR</b>	BA - Basic Ratchet (3x)
<b>BA19-M MC</b>	Basic Arm 19, medium (3x)
<b>BA-BC</b>	BA - Basic Clamp (2x)
<b>BA19-BDS MC</b>	BA19 - Basic Double Stand (2x)
<b>BA19-S MC</b>	Basic Arm 19, short (2x)
<b>BA-TB</b>	BA - Tele Boom Arm (2x)
<b>BA-CH</b>	BA - Cymbal Holder (2x)
<b>BA19-L MC</b>	Basic Arm 19, long (2x)



# DELITE REFERENCE



Photo: Micke Sandström

**Delite Bass Drums**

<b>DL 1814 BD NM*</b> Bass Drum	18" x 14"
<b>DL 1816 BD NM*</b> Bass Drum	18" x 16"
<b>DL 2017 BD NM*</b> Bass Drum	20" x 17.5"
<b>DL 2217 BD NM*</b> Bass Drum	22" x 17.5"
<b>DL 2417 BD NM*</b> Bass Drum	24" x 17.5"

**Delite Floor Toms**

<b>DL 1414 FT</b> Floor Tom	14" x 14"
<b>DL 1616 FT</b> Floor Tom	16" x 16"
<b>DL 1816 FT</b> Floor Tom	18" x 16"

**Delite Tom Toms**

<b>DL 0807 TT</b> Tom Tom	8" x 7"
<b>DL 0808 TT</b> Tom Tom	8" x 8"
<b>DL 1007 TT</b> Tom Tom	10" x 7"
<b>DL 1008 TT</b> Tom Tom	10" x 8"
<b>DL 1208 TT</b> Tom Tom	12" x 8"
<b>DL 1209 TT</b> Tom Tom	12" x 9"
<b>DL 1309 TT</b> Tom Tom	13" x 9"
<b>DL 1310 TT</b> Tom Tom	13" x 10"
<b>DL 1412 TT</b> Tom Tom	14" x 12"
<b>DL 1614 TT</b> Tom Tom	16" x 14"

**Delite Snare Drums**

<b>DL 1205 SDW</b> Maple Snare	12" x 5"
<b>DL 1404 SDWD</b> Maple Snare	14" x 4.25"
with die-cast hoops	
<b>DL 1405 SDWD</b> Maple Snare	14" x 5"
with die-cast hoops	
<b>DL 1406 SDWD</b> Maple Snare	14" x 6"
with die-cast hoops	
<b>DL 1405 SDBD</b> Brass Snare	14" x 5"
with die-cast hoops	
<b>DL 1406 SDBD</b> Brass Snare	14" x 6"
with die-cast hoops	
<b>DL 1405 SDSD</b> Steel Snare	14" x 5"
with die-cast hoops	

NM\*= No Mount / also available with Mount



## DELITE FINISHES

The brilliant acoustic features are not the only convincing aspect of SONOR's Delite Series. You also have 11 extraordinary high-polish finishes to choose from. Thanks to repeated spraying and polishing, our finishes offer unique intensity and depth of color. From Brilliant Black to Walnut Roots to our exclusive Sparkle finish Bright Copper, you are sure to find your personal favorite.



10316 Tiger Finish



13018 Ebony



11254 Birdseye Amber



30001 Walnut Roots



11258 Birdseye Cherry



11256 Birdseye Azure



11259 Brown Fade



11255 Brilliant Black



11262 Bright Copper Sparkle



11257 Birdseye Sunburst



# S CLASSIX SERIES

THE NEW SONOR CLASSICS



**SONOR S Classix Birch Shell Design**

Thin full birch shells made of Scandinavian birchwood deliver maximum strength, perfect curving and neutral tuning — thanks to tension-free cross lamination of the individual layers of wood (CLTF Cross Laminated Tension Free Process). The covered finishes are adhered across the entire surface of the shell for perfect looks and natural sound.

**SONOR S Classix Shell Thicknesses**

9 layers for tom toms, floor toms and snare drums = 5 mm  
9 layers for bass drums = 6 mm (medium shell)



The new SONOR S Classix Series is designed for advanced and Professional drummers alike, and for admirers of the classic SONOR look of the 1960's and '70's. Combined with state-of-the-art features and timeless retro finishes, the S Classix set is becoming the centerpiece of SONOR's drum series. With an extensive range of individual components to choose from, the S Classix series offers everything you could want in a genuine SONOR drum!

**SONOR S Classix Sounds**

With thin birch shells made of Scandinavian birchwood, this series offers a convincingly pithy and compulsive sound — powerful treble and mid-range pitches with well-balanced deep tones.

Whether it's a classic '60s beat, monster '70s groove or modern performance — with SONOR's S Classix set, you're equipped for anything.



**Tom Mounting System – Powerful Sounds Thanks to Minimal Shell Contact!**

The vibration-free T.A.R. system (*Total Acoustic Resonance*) with APS provides for maximum resonance and sustain.

**APS – Advanced Projection System**

The SONOR tom mounting system, the bass drum bracket, bass drum and floor tom legs all come equipped with special APS rubber insulators that prevent direct contact between the metal parts and the wooden shells. This gives the drums a more dynamic and precise sound.



**Bass Drum Bracket – It's Yours to Decide!**

The standard S Classix Series bass drum ships without a bracket. Optional bracket is available.

**Power Hoops – Clean Tuning and Crisp Attack!**

2.3 mm SONOR Power Hoops on all snare drums. 14" snare drums with chrome-plated die-cast hoop rims are available as an option.



**Bass Drum Claws – Protect Your Rims!**

Rubber padding beneath the bass drum claws protects the wooden rim from damage.



**Bass Drum Spurs – Quick and Easy Set-Up!**

Position clamps (Memory Locks) 'remember' your preferred bass drum spur height.



**Bass Drum Legs – On Solid Footing, Everywhere You Go!**

The bass drum legs can be turned around so they rest on either the rubber or the metal end. Adjustable with a fastening screw.

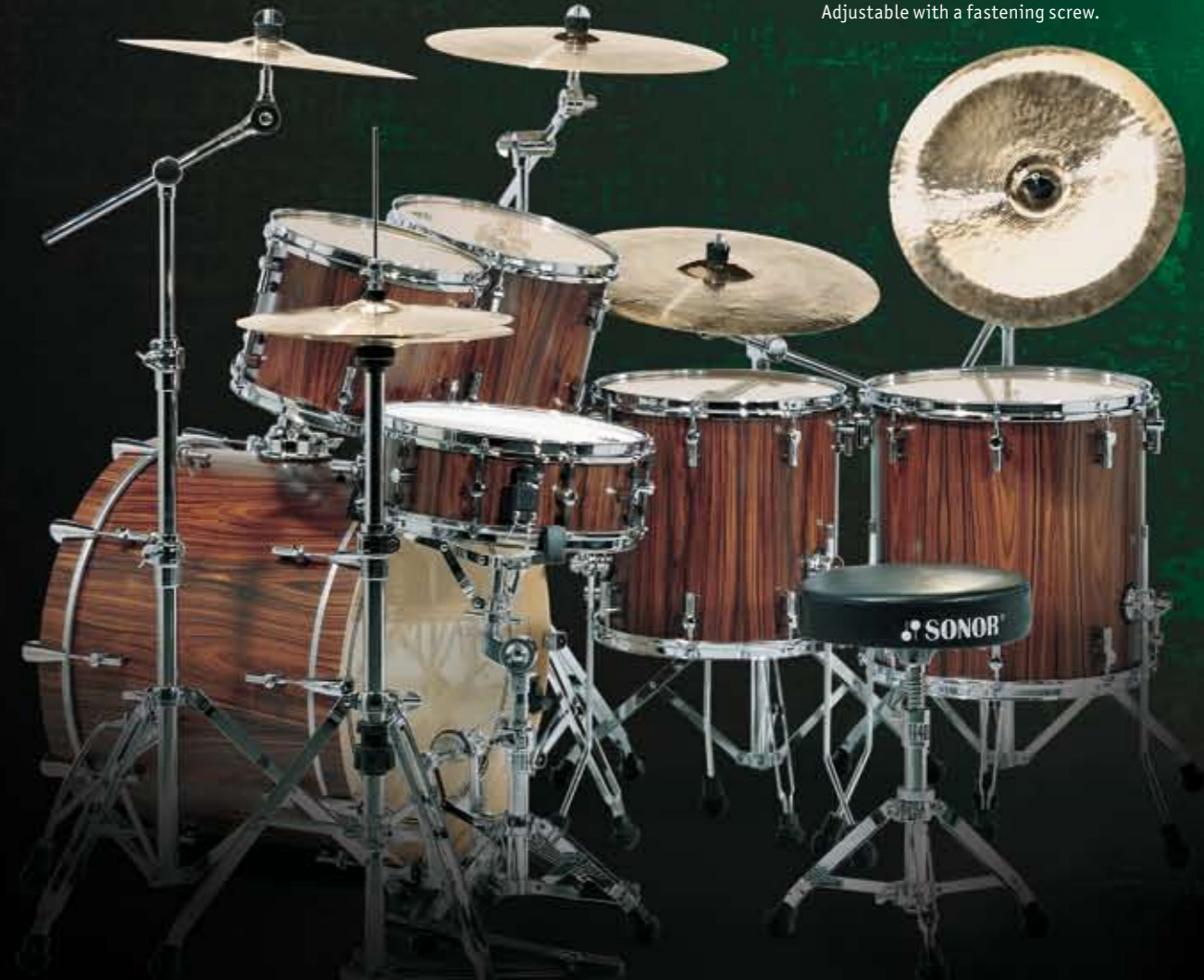


**Batter and Resonance Heads – Made by REMO USA**

- Tom Tom: SONOR Clear Medium
- Snare Drum: SONOR White Medium  
SONOR Clear Medium Resonance
- Bass Drum: SONOR Clear Power
- Bass Drum Front Heads:
- For Covering Color Surfaces:  
SONOR Power Black with white SONOR logo
- For Natural Wood Surfaces:  
SONOR Power White with black SONOR logo

**Tuning Lugs with TuneSafe – Right in Tune, 100% of the Time!**

All SONOR lugs are equipped with the TuneSafe tuning-safeguard feature, which prevents tension screws from loosening during hard rim shots or where batter heads have been loosely tuned. The new square tension screws with fine-pitch threads guarantee optimum tunability. Slotted tension screws with fine-pitch threads are still available.



# S CLASSIX SERIES



Photos: Matt Holton



**S Classix Set in 13011 Gold Oyster**

<b>SC 2417 BD NM</b>	Bass Drum	24" x 17.5"
<b>SC 10 1405 SDW</b>	Snare Drum	14" x 5"
<b>SC 1209 TT</b>	Tom Tom	12" x 9"
<b>SC 1414 FT</b>	Floor Tom	14" x 14"
<b>SC 1616 FT</b>	Floor Tom	16" x 16"

**Hardware**

<b>STS 476</b>	Single Tom Stand
<b>HS 475</b>	Hardware Set 400
<b>CBS 472</b>	Cymbal Boom Stand
<b>MBS 473</b>	Mini Boom Stand
<b>DT 470</b>	Drummer's Throne

**S Classix Set in 11249 White Oyster**

<b>SC 2217 BD NM</b>	Bass Drum	22" x 17.5"
<b>SC 2217 BD NM</b>	Bass Drum	22" x 17.5"
<b>SC 10 1405 SDS</b>	Snare Drum	14" x 5"
<b>SC 10 1205 SDW</b>	Snare Drum	12" x 5"
<b>SC 1008 TT</b>	Tom Tom	10" x 8"
<b>SC 1209 TT</b>	Tom Tom	12" x 9"
<b>SC 1414 FT</b>	Floor Tom	14" x 14"
<b>SC 1616 FT</b>	Floor Tom	16" x 16"

**Hardware**

<b>SS 477</b>	Snare Drum Stand (2x)
<b>HH 484</b>	Hi-Hat Stand
<b>DTS 475</b>	Double Tom Stand
<b>CBS 672 MC</b>	Cymbal Boom Stand (2x)
<b>MBS 473</b>	Mini Boom Stand (4x)
<b>SP 473</b>	Bass Drum Single Pedal (2x)
<b>DT 470</b>	Drummer's Throne



# S CLASSIX SERIES



Photo: Matthias Ketz

**S Classix Set in 13014 Black Silver Glass Glitter >**

<b>SC 2217 BD NM</b>	Bass Drum	22" x 17.5"
<b>SC 10 1405 SDW</b>	Snare Drum	14" x 5"
<b>SC 1008 TT</b>	Tom Tom	10" x 8"
<b>SC 1209 TT</b>	Tom Tom	12" x 9"
<b>SC 1414 FT</b>	Floor Tom	14" x 14"

**Hardware**

<b>SS 477</b>	Snare Drum Stand
<b>HH 484</b>	Hi-Hat Stand
<b>CTS 479</b>	Cymbal Tom Stand (2x)
<b>MBS 473</b>	Mini Boom Stand
<b>SP 473</b>	Bass Drum Single Pedal
<b>DT 470</b>	Drummer's Throne



**S Classix Set in 13026 Black Glass Glitter**

<b>SC 2017 BD NM</b>	Bass Drum	20" x 17.5"
<b>SC 10 1406 SDW</b>	Snare Drum	14" x 6"
<b>SC 10 1305 SDW</b>	Snare Drum	13" x 5"
<b>SC 0807 TT</b>	Tom Tom	8" x 7"
<b>SC 1008 TT</b>	Tom Tom	10" x 8"
<b>SC 1414 FT</b>	Floor Tom	14" x 14"

**Hardware**

<b>SS 477</b>	Snare Drum Stand
<b>HH 484</b>	Hi-Hat Stand
<b>CTS 479</b>	Cymbal Tom Stand (2x)
<b>DCS 479</b>	Double Cymbal Stand (2x)
<b>MBS 473</b>	Mini Boom Stand (2x)
<b>XH 474</b>	X-Hat (2x)
<b>MH 475</b>	Multi Holder for X-Hat (2x)
<b>SP 473</b>	Bass Drum Single Pedal
<b>DT 470</b>	Drummer's Throne



**< S Classix Set in 13012 Gold Glass Glitter**

<b>SC 2217 BD NM</b>	Bass Drum	22" x 17.5"
<b>SC 10 1405 SDW</b>	Snare Drum	14" x 5"
<b>SC 1209 TT</b>	Tom Tom	12" x 9"
<b>SC 1616 FT</b>	Floor Tom	16" x 16"

**Hardware**

<b>SS 477</b>	Snare Drum Stand
<b>HH 484</b>	Hi-Hat Stand
<b>STS 476</b>	Single Tom Stand
<b>CBS 472</b>	Cymbal Boom Stand
<b>MBS 473</b>	Mini Boom Stand (3x)
<b>DP 472 R</b>	Bass Drum Double Pedal, right
<b>DT 470</b>	Drummer's Throne



# S CLASSIX SERIES



**S Classix Set in 11251 Walnut Roots**

<b>SC 2217 BD NM</b>	Bass Drum	22" x 17.5"
<b>SC 10 1405 SDB</b>	Snare Drum	14" x 5"
<b>SC 0807 TT</b>	Tom Tom	8" x 7"
<b>SC 1008 TT</b>	Tom Tom	10" x 8"
<b>SC 1209 TT</b>	Tom Tom	12" x 9"
<b>SC 1411 TT</b>	Tom Tom	14" x 11"
<b>SC 1616 FT</b>	Floor Tom	16" x 16"
<b>SC 1816 FT</b>	Floor Tom	18" x 16"

**Hardware**

<b>DTS 475</b>	Double Tom Stand
<b>SS 477</b>	Snare Drum Stand
<b>HH 484</b>	Hi-Hat Stand
<b>CTS 479</b>	Cymbal Tom Stand (2x)
<b>CBS 672 MC</b>	Cymbal Boom Stand (2x)
<b>MBS 473</b>	Mini Boom Stand (3x)
<b>XH 674</b>	X-Hat
<b>MH 475</b>	Multi Holder for X-Hat
<b>DP 472 R</b>	Bass Drum Double Pedal, right
<b>DT 470</b>	Drummer's Throne

**S Classix Set in 11252 Rosewood**

<b>SC 2217 BD</b>	Bass Drum*	22" x 17.5"
<b>SC 10 1405 SDW</b>	Snare Drum	14" x 5"
<b>SC 1209 TT</b>	Tom Tom	12" x 9"
<b>SC 1310 TT</b>	Tom Tom	13" x 10"
<b>SC 1414 FT</b>	Floor Tom	14" x 14"
<b>SC 1616 FT</b>	Floor Tom	16" x 16"

\*with Bass Drum Bracket

**Hardware**

<b>HS 475</b>	Hardware Set 400
<b>MBS 473</b>	Mini Boom Stand (2x)
<b>DT 470</b>	Drummer's Throne



# S CLASSIX SERIES



**S Classix Set in 11247 Ebony**

<b>SC 2217 BD</b>	Bass Drum*	22" x 17.5"
<b>SC 10 1405 SDW</b>	Snare Drum	14" x 5"
<b>SC 1008 TT</b>	Tom Tom	10" x 8"
<b>SC 1209 TT</b>	Tom Tom	12" x 9"
<b>SC 1616 FT</b>	Floor Tom	16" x 16"

**Hardware**

<b>DTH 475</b>	Double Tom Holder
<b>HS 475</b>	Hardware Set 400
<b>MBS 473</b>	Mini Boom Stand (2x)
<b>DT 470</b>	Drummer's Throne

\*with Bass Drum Bracket



**S Classix Set in 13017 Stratawood**

<b>SC 2017 BD NM</b>	Bass Drum	20" x 17.5"
<b>SC 10 1405 SDWD</b>	Snare Drum	14" x 5"
<b>SC 1008 TT</b>	Tom Tom	10" x 8"
<b>SC 1209 TT</b>	Tom Tom	12" x 9"
<b>SC 1411 TT</b>	Tom Tom	14" x 11"
<b>SC 1616 FT</b>	Floor Tom	16" x 16"

**Hardware**

<b>DTS 475</b>	Double Tom Stand
<b>SS 477</b>	Snare Drum Stand
<b>HH 484</b>	Hi-Hat Stand
<b>CTS 479</b>	Cymbal Tom Stand
<b>DCS 478</b>	Double Cymbal Stand
<b>MBS 473</b>	Mini Boom Stand (4x)
<b>XH 474</b>	X-Hat
<b>MH 475</b>	Multi Holder for X-Hat
<b>SP 673</b>	Bass Drum Single Pedal
<b>DT 470</b>	Drummer's Throne



**S Classix Set in 11253 Grained Maple**

<b>SC 2417 BD NM</b>	Bass Drum	24" x 17.5"
<b>SC 10 1405 SDW</b>	Snare Drum	14" x 5"
<b>SC 1310 TT</b>	Tom Tom	13" x 10"
<b>SC 1616 FT</b>	Floor Tom	16" x 16"
<b>SC 1816 FT</b>	Floor Tom	18" x 16"

**Hardware**

<b>HS 475</b>	Hardware Set 400
<b>CTS 479</b>	Cymbal Tom Stand
<b>CBS 472</b>	Cymbal Boom Stand
<b>MBS 473</b>	Mini Boom Stand
<b>DT 470</b>	Drummer's Throne



# REFERENCE

# S CLASSIX REFERENCE



Photo: Fred van Diem



Photo: Erika Goldring

S Classix Bass Drums

SC 1814 BD NM*	Bass Drum	18" x 14"
SC 1816 BD NM*	Bass Drum	18" x 16"
SC 2017 BD NM*	Bass Drum	20" x 17.5"
SC 2217 BD NM*	Bass Drum	22" x 17.5"
SC 2417 BD NM*	Bass Drum	24" x 17.5"

S Classix Floor Toms

SC 1414 FT	Floor Tom	14" x 14"
SC 1616 FT	Floor Tom	16" x 16"
SC 1816 FT	Floor Tom	18" x 16"

NM\*= No Mount / also available with Mount

S Classix Tom Toms

SC 0807 TT	Tom Tom	8" x 7"
SC 1008 TT	Tom Tom	10" x 8"
SC 1208 TT	Tom Tom	12" x 8"
SC 1209 TT	Tom Tom	12" x 9"
SC 1310 TT	Tom Tom	13" x 10"
SC 1411 TT	Tom Tom	14" x 11"
SC 1613 TT	Tom Tom	16" x 13"

S Classix Snare Drums

SC 10 1205 SDW	Birch Snare	12" x 5"
SC 10 1305 SDW	Birch Snare	13" x 5"
SC 10 1405 SDW	Birch Snare	14" x 5"
SC 10 1405 SDWD	Birch Snare	14" x 5"
	with die-cast hoops	
SC 10 1406 SDW	Birch Snare	14" x 6"
SC 10 1406 SDWD	Birch Snare	14" x 6"
	with die-cast hoops	
SC 10 1405 SDB	Brass Snare	14" x 5"
SC 10 1405 SDS	Steel Snare	14" x 5"

## S CLASSIX FINISHES

Whether fitted with S Classix's attractive retro surfaces, such as Gold or White Oyster, or supplied with classic, high-quality wood veneers such as Rosewood or Ebony ... you'll produce a great performance every time.



11251 Walnut Roots



11247 Ebony



11252 Rosewood



13017 Stratawood



11253 Grained Maple



13011 Gold Oyster



11249 White Oyster



13012 Gold Glass Glitter



13014 Black Silver Glass Glitter



13026 Black Glass Glitter **NEW**



THE COOL WAY TO JOIN THE PROFESSIONALS

# FORCE 3007



**SONOR Force 3007 Shell Design**

Shells deliver maximum strength, perfect curving and neutral tuning, due to the tension-free cross lamination of individual layers of wood (CLTF Cross Laminated Tension Free Process).

**SONOR Force 3007 Shell Thicknesses**

7 layers for bass drums = 7.2 mm  
 2.4 mm Canadian maple + 2.4 mm Chinese maple + 2.4 mm Canadian maple  
 7 layers for snare drums, tom toms and floor toms = 5.8 mm  
 1.7 mm Canadian maple + 2.4 mm Chinese maple + 1.7 mm Canadian maple



The SONOR Force 3007 series is the pinnacle of the new Force range. The 3007 series is a set for every drummer: designed especially for beginning and advancing drummers, Force 3007 drum sets can also be an interesting alternative for semi-professional drummers.

A wide array of pre-configured sets, components and the very latest features from the professionals' series make SONOR Force 3007 sets a real hit!

**Force 3007 Sounds**

Nine-layer maple shells offer uncompromisingly rich and warm sounds, highlight lower pitches and provide balance in the mid-range and treble. Whether in the practice space, recording studio or on stage, SONOR's Force 3007 sets deliver a powerful performance every time.



**Tom Mounting System – Powerful Sounds Thanks to Minimal Shell Contact!**

The vibration-free T.A.R. system (*Total Acoustic Resonance*) with APS provides for maximum resonance and sustain.

**Short Tom Sizes – Full Sustain and Quick Response!**

The new SONOR Force tom toms with 'short' shells offer controlled sustain and give the drums a crisp attack.



**Bass Drum Claws – Protect Your Rims!**

Rubber padding beneath the bass drum claws protects the wooden rim against damage.



**Bass Drum Spurs – Quick and Easy Set-Up!**

Position clamps (Memory Locks) 'remember' your preferred bass drum spur height.



**Bass Drum Legs – On Solid Footing, Everywhere You Go!**

The bass drum legs can be turned around so they rest on either the rubber or the metal end. Adjustable using a fastening screw.



**Tuning Lugs with TuneSafe – Real Eye-Catchers, with SONOR Design!**

The new SONOR Force tuning lugs with fine-pitch threads are equipped with the TuneSafe tuning safeguard feature, which prevents tension screws from loosening.

**Pre-Muffled Bass Drum Heads – For Just the Right Kick!**

Pre-muffled batter and resonance heads on the bass drum provide 'all-round' powerful sounds and dynamic 'kicks'. SONOR heads made by REMO.



**Bass Drum Bracket – Smooth and Snug!**

The standard Force Series bass drum ships with a bracket. The inner workings of the bracket are built for a strong and secure base; thanks to a smooth yet firm application of pressure.

**Individual Components – For Enhanced Set-Ups!**

A large selection of individual components provide perfect add-ons for an even bigger performance – ideal for live gigs requiring multiple set-ups.

**400-Series Hardware Set – Reliable and Sturdy 'On the Road'!**

The new hardware 400 series provides solid double-braced stands for maximum stability and reliability. The SONOR 3-segment clamp offers maximum support for very little effort – whether for jazz or power drumming.

**17.5" Deep Bass Drum – For More Power and Rich Bass Drum Sounds!**



# FORCE 3007



**F3007 Stage 1 Set in 11234 Piano Black** >

<b>F37 2217 BD</b>	Bass Drum	22" x 17.5"
<b>F37 1405 SDW</b>	Snare Drum	14" x 5.5"
<b>F37 1209 TT</b>	Tom Tom	12" x 9"
<b>F37 1310 TT</b>	Tom Tom	13" x 10"
<b>F37 1616 FT</b>	Floor Tom	16" x 16"
<b>DTH 275</b>	Double Tom Holder	
<b>Hardware</b>		
<b>HS 475</b>	Hardware Set 400	



**Force 3007 Set in 13010 Black Red Sparkle**

**with Black Shell Hardware**

<b>F37 2217 BD</b>	Bass Drum	22" x 17.5"
<b>F37 2217 BD</b>	Bass Drum	22" x 17.5"
<b>F37 1405 SDW</b>	Snare Drum	14" x 5.5"
<b>F37 1205 SDW</b>	Snare Drum	12" x 5"
<b>F37 1008 TT</b>	Tom Tom	10" x 8"
<b>F37 1209 TT</b>	Tom Tom	12" x 9"
<b>F37 1414 FT</b>	Floor Tom	14" x 14"
<b>F37 1616 FT</b>	Floor Tom	16" x 16"

**Hardware**

<b>HS 475</b>	Hardware Set 400
<b>BA 19-BDA</b>	BA19 - Bass Drum Adapter
<b>BA -CR</b>	BA - Connection Ratchet
<b>BA19 -BR</b>	BA - Basic Ratchet (3x)
<b>BA 19-M MC</b>	Basic Arm 19, medium (3x)
<b>DTS 475</b>	Double Tom Stand
<b>DCS 478</b>	Double Cymbal Stand (2x)
<b>MBS 473</b>	Mini Boom Stand
<b>XH 474</b>	X-Hat
<b>MH 475</b>	Multi Holder for X-Hat
<b>SP 473</b>	Bass Drum Single Pedal (2x)



< **F3007 Stage 2 Set in 11238 Maple**

<b>F37 2217 BD</b>	Bass Drum	22" x 17.5"
<b>F37 1405 SDW</b>	Snare Drum	14" x 5.5"
<b>F37 1008 TT</b>	Tom Tom	10" x 8"
<b>F37 1209 TT</b>	Tom Tom	12" x 9"
<b>F37 1414 FT</b>	Floor Tom	14" x 14"
<b>DTH 275</b>	Double Tom Holder	
<b>Hardware</b>		
<b>HS 475</b>	Hardware Set 400	





# FORCE 3007

# ROCK SET



< **F3007 Rock Set in 13009 Smooth Red Burst**

<b>F37 2220 BD</b>	Bass Drum	22" x 20"
<b>F37 1406 SDW</b>	Snare Drum	14" x 6"
<b>F37 1208 TT</b>	Tom Tom	12" x 8"
<b>F37 1616 FT</b>	Floor Tom	16" x 16"
<b>TA 278</b>	Tom Arm	
<b>MC 276</b>	Multi Clamp	
<b>Hardware</b>		
<b>HS 475</b>	Hardware Set 400	



**F3007 Studio 1 Set in 11237 Autumn Fade**

<b>F37 2017 BD</b>	Bass Drum	20" x 17.5"
<b>F37 1405 SDW</b>	Snare Drum	14" x 5.5"
<b>F37 1008 TT</b>	Tom Tom	10" x 8"
<b>F37 1209 TT</b>	Tom Tom	12" x 9"
<b>F37 1414 FT</b>	Floor Tom	14" x 14"
<b>DTH 275</b>	Double Tom Holder	
<b>Hardware</b>		
<b>HS 475</b>	Hardware Set 400	

**Force 3007 Set in 13008 Smooth Brown Burst >**

<b>F37 1816 BD</b>	Bass Drum	18" x 16"
<b>F37 1005 SDWP</b>	Snare Drum	10" x 5"
<b>F37 1405 SDW</b>	Snare Drum	14" x 5.5"
<b>F37 1008 TT</b>	Tom Tom	10" x 8"
<b>F37 1414 FT</b>	Floor Tom	14" x 14"
<b>Hardware</b>		
<b>STH 274</b>	Single Tom Holder	
<b>HS 475</b>	Hardware Set 400	
<b>MBS 473</b>	Mini Boom Stand	
<b>CTS 479</b>	Cymbal Tom Stand	



**Force 3007 Set in 11240 Midnight Fade**

<b>F37 2417 BD</b>	Bass Drum	24" x 17.5"
<b>F37 1405 SDS</b>	Snare Drum	14" x 5.5"
<b>F37 1411 TT</b>	Tom Tom	14" x 11"
<b>F37 1616 FT</b>	Floor Tom	16" x 16"
<b>F37 1816 FT</b>	Floor Tom	18" x 16"
<b>Hardware</b>		
<b>HS 475</b>	Hardware Set 400	
<b>STS 476</b>	Single Tom Stand	
<b>DCS 478</b>	Double Cymbal Stand	
<b>DT 470</b>	Drummer's Throne	



# FORCE 3007



**Force 3007 Set in 30012 Orange Sparkle Fade with Black Shell Hardware**

<b>F37 2017 BD</b>	Bass Drum	20" x 17.5"
<b>F37 1405 SDW</b>	Snare Drum	14" x 5.5"
<b>F37 0807 TT</b>	Tom Tom	8" x 7"
<b>F37 1008 TT</b>	Tom Tom	10" x 8"
<b>F37 1209 TT</b>	Tom Tom	12" x 9"
<b>F37 1414 FT</b>	Floor Tom	14" x 14"
<b>F37 1616 FT</b>	Floor Tom	16" x 16"

**Hardware**

<b>DTH 275 B</b>	Double Tom Holder, black
<b>SS 477</b>	Snare Drum Stand
<b>HH 484</b>	Hi-Hat Stand
<b>CTS 479</b>	Cymbal Tom Stand
<b>DCS 478</b>	Double Cymbal Stand (2x)
<b>MBS 473</b>	Mini Boom Stand (2x)
<b>XH 474</b>	X-Hat
<b>MH 475</b>	Multi Holder for X-Hat
<b>DP 472 R</b>	Bass Drum Double Pedal, right
<b>DT 470</b>	Drummer's Throne

## JUNGLE SET

A compact drum set that's big on sound, SONOR's Force 3007 Jungle Set is constructed of maple shells. Improvements include a bass drum with lacquered wooden hoops, short-size toms and new tuning lugs.

The ideal club and tour set for drummers looking for a compact, ready-to-play, easy-to-transport set. Ideal for the modern 'in' beats ... and still big enough for heaps of fun!

**F3007 Jungle Set in 11243 Red Maple**

<b>F37 1616 BD</b>	Bass Drum	16" x 16"
<b>F37 1008 TT</b>	Tom Tom	10" x 8"
<b>F37 1412 FT</b>	Floor Tom	14" x 12"
<b>STH 274</b>	Single Tom Holder	
additionally shown:		
<b>F37 1002 SDJ</b>	Jungle Snare	10" x 2"
<b>JTH</b>	Jungle Snare Tom Holder Adapter	

**Hardware**

<b>HH 484</b>	Hi-Hat Stand
<b>STS 476</b>	Single Tom Stand
<b>MBS 473</b>	Mini Boom Stand (3x)
<b>DCS 478</b>	Double Cymbal Stand
<b>XH 474</b>	X-Hat
<b>MH 475</b>	Multi Holder for X-Hat
<b>DP 472 R</b>	Bass Drum Double Pedal, right
<b>DT 470</b>	Drummer's Throne



OPTIMUM PLAYING COMFORT WITH PROFESSIONAL FEATURES

# FORCE 2007



**SONOR Force 2007 Shell Design**

Birchwood shells deliver maximum strength, perfect curving and neutral tuning — thanks to tension-free cross lamination of the individual layers of wood (CLTF Cross Laminated Tension Free Process).

**SONOR Force 2007 Shell Thicknesses**

6 layers for bass drums, tom toms, floor toms and snare drums = 7.2 mm



The SONOR Force 2007 Series is designed for advanced drummers not willing to sacrifice their musical freedom. Four preconfigured sets and 12 individual components offer unlimited possibilities for a drummer's individual configuration.

**SONOR Force 2007 Sounds**

The 9-layered birchwood shells are a superb foundation for SONOR Force 2007 Sets. A hefty and dynamic sound — with accentuated mid-ranges and highs, and defined lows — are the hallmark of these shells. With high-gloss-lacquered natural wood surfaces, SONOR's Force 2007 really steals the show.



**Tom Mounting System – Powerful Sounds Thanks to Minimal Shell Contact!**

The vibration-free T.A.R. system (Total Acoustic Resonance) provides for maximum resonance and sustain. SONOR's tried-and-true 'Ball Clamp' system with individual tom arms allows tom tom positioning wherever the drummer wishes.

**Short Tom Sizes – Full Sustain and Quick Response!**

The new SONOR Force tom toms with 'short' shells offer controlled sustain and give the drums a crisp attack.



**Bass Drum Legs – On Solid Footing, Everywhere You Go!**

The bass drum legs can be turned to convert from rubber to metal. Adjustable using a fastening screw.



**Hardware 200 Set – Reliable and Now Even Better!**

The new 5-piece Hardware 200 Set comes with two mini boom stands for a professional look, while the solid double-braced stands provide optimum reliability. SONOR's 3-section clamp offers maximum support with very little effort – whether for light or heavy drumming.

**17.5" Deep Bass Drum – For More Power and Rich Bass Drum Sounds!**

**Tuning Lugs with TuneSafe – Real Eye-Catchers with the SONOR Design!**

The new SONOR Force tuning lugs with fine-pitch threads are equipped with the TuneSafe tuning safeguard feature, which prevents tension screws from loosening.

**Pre-Muffled Bass Drum Heads – For Just the Right Kick!**

Pre-muffled batter and resonance heads on the bass drum provide 'all-round' powerful sounds and dynamic 'kicks'. SONOR heads made by REMO.



**Bass Drum Bracket – Smooth and Snug!**

The standard Force Series bass drum ships with this bracket. The inner workings of the bracket are built for a strong and secure base; thanks to a smooth yet firm application of pressure.

**Individual Components – For the Enhanced Set-up!**

The large selection of individual components is the perfect addition for expanded performance – ideal for each drummer's individual configuration.



# FORCE 2007

Photos: Melanie Mathieu

**F2007 Stage 1 Set in 11234 Piano Black**

<b>F27 2217 BD</b>	Bass Drum	22" x 17.5"
<b>F27 1405 SDW</b>	Snare Drum	14" x 5.5"
<b>F27 1209 TT</b>	Tom Tom	12" x 9"
<b>F27 1310 TT</b>	Tom Tom	13" x 10"
<b>F27 1616 FT</b>	Floor Tom	16" x 16"

<b>DTH 275</b>	Double Tom Holder
<b>Hardware</b>	
<b>HS 275</b>	Hardware Set 200



**F2007 Stage 2 Set in 11235 Blue Fade**

<b>F27 2217 BD</b>	Bass Drum	22" x 17.5"
<b>F27 1405 SDW</b>	Snare Drum	14" x 5.5"
<b>F27 1008 TT</b>	Tom Tom	10" x 8"
<b>F27 1209 TT</b>	Tom Tom	12" x 9"
<b>F27 1414 FT</b>	Floor Tom	14" x 14"
<b>DTH 275</b>	Double Tom Holder	

**Hardware**

<b>HS 275</b>	Hardware Set 200
additionally shown:	
<b>F27 0807 TT</b>	Tom Tom 8" x 7"
<b>F27 1616 FT</b>	Floor Tom 16" x 16"
<b>MBS 273</b>	Mini Boom Stand (2x)
<b>CTS 479</b>	Cymbal Tom Stand

# FORCE 2007



**F2007 Set in 11236 Amber Fade**

<b>F27 2217 BD</b>	Bass Drum	22" x 17.5"
<b>F27 1405 SDW</b>	Snare Drum	14" x 5.5"
<b>F27 1008 TT</b>	Tom Tom	10" x 8"
<b>F27 1209 TT</b>	Tom Tom	12" x 9"
<b>F27 1616 FT</b>	Floor Tom	16" x 16"
<b>DTH 275</b>	Double Tom Holder ( <i>not shown</i> )	
<b>Hardware</b>		
<b>HS 275</b>	Hardware Set 200	

additionally shown:

<b>F27 1816 BD</b>	Bass Drum	18" x 16"
<b>F27 1405 SDS</b>	Snare Drum	14" x 5.5"
<b>F27 1411 TT</b>	Tom Tom	14" x 11"
<b>STH 274</b>	Single Tom Holder	
<b>DTS 475</b>	Double Tom Stand	
<b>SS 277</b>	Snare Drum Stand	
<b>MBS 273</b>	Mini Boom Stand (2x)	
<b>CTS 479</b>	Cymbal Tom Stand	
<b>MH 475</b>	Multi Holder for X-Hat	
<b>XH 474</b>	X-Hat	

**F2007 Studio 1 Set in 11233 Birch**

<b>F27 2017 BD</b>	Bass Drum	20" x 17.5"
<b>F27 1405 SDW</b>	Snare Drum	14" x 5.5"
<b>F27 1008 TT</b>	Tom Tom	10" x 8"
<b>F27 1209 TT</b>	Tom Tom	12" x 9"
<b>F27 1414 FT</b>	Floor Tom	14" x 14"

<b>DTH 275</b>	Double Tom Holder	
<b>Hardware</b>		
<b>HS 275</b>	Hardware Set 200	



# FORCE 2007 ROCK SET



**F2007 Rock Set in 13006 Dark Green Burst**

<b>F27 2220 BD</b>	Bass Drum	22" x 20"
<b>F27 1406 SDW</b>	Snare Drum	14" x 6"
<b>F27 1208 TT</b>	Tom Tom	12" x 8"
<b>F27 1616 FT</b>	Floor Tom	16" x 16"

<b>TA 278</b>	Tom Arm
<b>MC 276</b>	Multi Clamp
<b>Hardware</b>	
<b>HS 275</b>	Hardware Set 200

**F2007 Set in 13007 Natural Fade**

<b>F27 2217 BD</b>	Bass Drum	22" x 17.5"
<b>F27 1405 SDW</b>	Snare Drum	14" x 5.5"
<b>F27 1209 TT</b>	Tom Tom	12" x 9"
<b>F27 1414 FT</b>	Floor Tom	14" x 14"
<b>F27 1616 FT</b>	Floor Tom	16" x 16"

**Hardware**

<b>HS 275</b>	Hardware Set 200
<b>STH 274</b>	Single Tom Holder
<b>DCS 478</b>	Double Cymbal Stand
<b>DT 270</b>	Drummer's Throne



# FORCE 1007

THE BEST FOR THE SOUND-CONSCIOUS BEGINNER



The SONOR Force 1007 Set – designed especially for beginners at an uncompromisingly attractive price. Extremely interesting for all up-and-coming rockers, jazz cats, enthusiasts of metal or the blues ... or any drummer who's looking for a drum set that is sturdy, yet versatile.

### SONOR Force 1007 Sounds

The 9-layer basswood shells of the SONOR Force 1007 Sets are full bodied, providing balanced sound with lots of power up front.

### Short Tom Sizes – Simple Tuning, Short Shell!

The new SONOR Force 1007 tom toms with 'short' shells generate a controlled pitch and can be positioned lower and easier to reach than most beginner' sets.

### Double Tom Holder – The Best Support – Guaranteed!

SONOR's tried-and-true 'Ball Clamp' system with individual tom arms allows tom tom positioning wherever the drummer wishes.



### Tuning Lugs with TuneSafe – Real Eye-Catchers with the SONOR Design!

The new SONOR Force tuning lugs with fine-pitch threads are equipped with the TuneSafe tuning safeguard feature, which prevents tension screws from loosening.

### 17.5" Deep Bass Drum – For More Power and Rich Bass Drum Sounds!

### Pre-Muffled Bass Drum Heads – For Just the Right Kick!

Pre-muffled batter and resonance heads on the bass drum provide all around powerful sounds and dynamic 'kicks'. SONOR heads made by REMO.



### Bass Drum Legs – On Solid Footing, Everywhere You Go!

The bass drum legs can be turned to convert from rubber to metal. Adjustable using a fastening screw.

### Hardware 200 Set – Reliable and Now Even Better!

The new four-piece 200 Series Hardware Set includes one mini boom stand. The solid double-braced stands provide optimum reliability. SONOR's 3-section clamp offers maximum support for very little effort – whether for smooth or heavy drumming.



### SONOR Force 1007 Shell Design

Basswood shells deliver maximum strength, perfect curving, and neutral tuning – thanks to tension-free cross-lamination of the individual layers of wood (CLTF Cross Laminated Tension Free Process). The covered finish is very sturdy and long lasting, not to mention the workmanship is impeccable.

### SONOR Force 1007 Thicknesses

9 layers for bass drums, tom toms, floor toms and snare drums = 7.2 mm

### F1007 Studio 1 Set in 11230 Natural >

F17 2017 BD	Bass Drum	20" x 17.5"
F17 1405 SDW	Snare Drum	14" x 5.5"
F17 1008 TT	Tom Tom	10" x 8"
F17 1209 TT	Tom Tom	12" x 9"
F17 1414 FT	Floor Tom	14" x 14"
DTH 275	Double Tom Holder	
	4-piece Hardware 200 Set	

additionally shown:

MBS 273	Mini Boom Stand
---------	-----------------

### F1007 Stage 2 Set

#### in 13005 Smooth Red

F17 2217 BD	Bass Drum	22" x 17.5"
F17 1405 SDW	Snare Drum	14" x 5.5"
F17 1008 TT	Tom Tom	10" x 8"
F17 1209 TT	Tom Tom	12" x 9"
F17 1414 FT	Floor Tom	14" x 14"
DTH 275	Double Tom Holder	
	4-piece Hardware 200 Set	

additionally shown:

MBS 273	Mini Boom Stand >
---------	-------------------

### < F1007 Stage 2 Set in 11232 Snow White with Black Shell Hardware

F17 2217 BD	Bass Drum	22" x 17.5"
F17 1405 SDW	Snare Drum	14" x 5.5"
F17 1008 TT	Tom Tom	10" x 8"
F17 1209 TT	Tom Tom	12" x 9"
F17 1414 FT	Floor Tom	14" x 14"
DTH 275 B	Double Tom Holder, black	
	4-piece Hardware 200 Set	

additionally shown:

MBS 273	Mini Boom Stand
---------	-----------------



# FORCE 507

## OFF TO THE RIGHT START



The SONOR Force 507 Set is designed for beginners taking their first step into the drum community. With its unbeatable price, the Force 507 set is the picture of long-lasting musical pleasure at a small price.

### Force 507 Sounds

Because beginners shouldn't have to hide from established players, the 9-layer basswood shells of SONOR's Force 507 Sets offers the needed punch to keep those just starting out from falling by the musical wayside.

### Short Tom Sizes – Simple Tuning, Short Shell!

The new SONOR Force 507 tom toms with 'short' shells generate a controlled pitch and can be positioned lower and easier to reach than most beginner sets. A shortcut into the world of drumming



### Bass Drum Legs – On Solid Footing, Everywhere You Go!

The bass drum legs can be turned to convert from rubber to metal. Adjustable using a fastening screw.

### Pre-Muffled Bass Drum Heads – For Crisp Sounds!

Pre-muffled batter and resonance heads on the bass drum provide all around powerful sounds.



### Tuning Lugs with TuneSafe – Unbeatable Features, Right from the Start!

The new SONOR Force tuning lugs are equipped with the TuneSafe tuning safeguard feature, which prevents tension screws from loosening. And for the beginner, this means the "mood" lasts even longer.

### Double Tom Holder – Sturdy and Individually Tailored!

With the tried and true 'Ball Clamp' system, the tom toms can be securely positioned wherever the drummer wishes.

### Double-Braced Hardware – Sturdy and Steady!

### SONOR Force 507 Shell Design

The basswood shells deliver maximum strength, perfect curving, and neutral tuning thanks to tension-free cross-lamination of the individual layers of wood (CLTF Cross Laminated Tension Free Process). The covered finish is very sturdy and long lasting, and the workmanship is impeccable.

### SONOR Force 507 Shell Thicknesses

9 layers for bass drums, tom toms, floor toms and snare drums = 7.2 mm



### SONOR Force 507 Studio 1 Set in 11228 Wine Red

F57 2016 BD	Bass Drum	20" x 16"
F57 1405 SDS	Snare Drum	14" x 5.5"
F57 1008 TT	Tom Tom	10" x 8"
F57 1209 TT	Tom Tom	12" x 9"
F57 1414 FT	Floor Tom	14" x 14"
		4-piece Hardware Set
		2-Tom Holder

### SONOR Force 507 Combo Set in 11229 Black

F57 1816 BD	Bass Drum	18" x 16"
F57 1405 SDS	Snare Drum	14" x 5.5"
F57 1008 TT	Tom Tom	10" x 8"
F57 1209 TT	Tom Tom	12" x 9"
F57 1414 FT	Floor Tom	14" x 14"
		4-piece Hardware Set
		2-Tom Holder

### SONOR Force 507 Stage 1 Set in 13004 Brushed Blue

F57 2216 BD	Bass Drum	22" x 16"
F57 1405 SDS	Snare Drum	14" x 5.5"
F57 1209 TT	Tom Tom	12" x 9"
F57 1310 TT	Tom Tom	13" x 10"
F57 1616 FT	Floor Tom	16" x 16"
		4-piece Hardware Set
		2-Tom Holder

additionally shown:

MBS 53	Mini Boom Stand
DT 270	Drummer's Throne, round seat
CB 8 Set 1	Cast B8 Cymbals, 14" Hi-Hat, 16" Crash and 20" Ride





# FORCE REFERENCE



**Force 3007 Single Components**

**Force 3007 Bass Drums**

<b>F37 1816 BD</b>	Bass Drum	18" x 16"
<b>F37 2017 BD</b>	Bass Drum	20" x 17.5"
<b>F37 2217 BD</b>	Bass Drum	22" x 17.5"
<b>F37 2417 BD</b>	Bass Drum	24" x 17.5"

**Force 3007 Snare Drums**

<b>F37 1002 SDJ</b>	Jungle Snare	10" x 2"
<b>F37 1005 SDWP</b>	Maple Snare	10" x 5" with Prism Clamp
<b>F37 1205 SDWP</b>	Maple Snare	12" x 5" with Prism Clamp
<b>F37 1307 SDW</b>	Maple Snare	13" x 7"
<b>F37 1405 SDW</b>	Maple Snare	14" x 5.5"
<b>F37 1405 SDS</b>	Steel Snare	14" x 5.5"

**Force 3007 Tom Toms**

<b>F37 0807 TT</b>	Tom Tom	8" x 7"
<b>F37 1008 TT</b>	Tom Tom	10" x 8"
<b>F37 1209 TT</b>	Tom Tom	12" x 9"
<b>F37 1310 TT</b>	Tom Tom	13" x 10"
<b>F37 1411 TT</b>	Tom Tom	14" x 11"
<b>F37 1613 TT</b>	Tom Tom	16" x 13"

**Force 3007 Floor Toms**

<b>F37 1414 FT</b>	Floor Tom	14" x 14"
<b>F37 1616 FT</b>	Floor Tom	16" x 16"
<b>F37 1816 FT</b>	Floor Tom	18" x 16"

**Force 2007 Single Components**

**Force 2007 Bass Drums**

<b>F27 1816 BD</b>	Bass Drum	18" x 16"
<b>F27 2017 BD</b>	Bass Drum	20" x 17.5"
<b>F27 2217 BD</b>	Bass Drum	22" x 17.5"

**Force 2007 Snare Drums**

<b>F27 1405 SDW</b>	Birch Snare	14" x 5.5"
<b>F27 1405 SDS</b>	Steel Snare	14" x 5.5"

**Force 2007 Tom Toms**

<b>F27 0807 TT</b>	Tom Tom	8" x 7"
<b>F27 1008 TT</b>	Tom Tom	10" x 8"
<b>F27 1209 TT</b>	Tom Tom	12" x 9"
<b>F27 1310 TT</b>	Tom Tom	13" x 10"
<b>F27 1411 TT</b>	Tom Tom	14" x 11"

**Force 2007 Floor Toms**

<b>F27 1414 FT</b>	Floor Tom	14" x 14"
<b>F27 1616 FT</b>	Floor Tom	16" x 16"

**Force 1007 Single Component**

**Force 1007 Snare Drum**

<b>F17 1405 SDS</b>	Steel Snare	14" x 5.5"
---------------------	-------------	------------

**Force 507 Finishes**

A sturdy eye-catcher!



11229 Black

11228 Wine Red

13004 Brushed Blue

**Force 3007 Preconfigured Sets**

**F3007 Studio 1 Set**

20" BD, 14" SDW, 10" TT, 12" TT, 14" FT,  
DTH 275, HS 475 Hardware 400 Set

**F3007 Stage 1 Set**

22" BD, 14" SDW, 12" TT, 13" TT, 16" FT,  
DTH 275, HS 475 Hardware 400 Set

**F3007 Stage 2 Set**

22" BD, 14" SDW, 10" TT, 12" TT, 14" FT,  
DTH 275, HS 475 Hardware 400 Set

**F3007 Rock Set**

22" BD, 14" SDW, 12" TT, 16" FT,  
TA 278, MC 276, HS 475 Hardware 400 Set

**F3007 Jungle Set**

16" BD, 10" TT, 14" FT, STH 274

**Force 2007 Preconfigured Sets**

**F2007 Studio 1 Set**

20" BD, 14" SDW, 10" TT, 12" TT, 14" FT,  
DTH 275, HS 275 Hardware 200 Set

**F2007 Stage 1 Set**

22" BD, 14" SDW, 12" TT, 13" TT, 16" FT,  
DTH 275, HS 275 Hardware 200 Set

**F2007 Stage 2 Set**

22" BD, 14" SDW, 10" TT, 12" TT, 14" FT,  
DTH 275, HS 275 Hardware 200 Set

**F2007 Rock Set**

22" BD, 14" SDW, 12" TT, 16" FT,  
TA 278, MC 276, HS 275 Hardware 200 Set

**Force 1007 Preconfigured Sets**

**F1007 Studio 1 Set**

20" BD, 14" SDW, 10" TT, 12" TT, 14" FT,  
DTH 275, 4-piece Hardware 200 Set

**F1007 Stage 1 Set**

22" BD, 14" SDW, 12" TT, 13" TT, 16" FT,  
DTH 275, 4-piece Hardware 200 Set

**F1007 Stage 2 Set**

22" BD, 14" SDW, 10" TT, 12" TT, 14" FT,  
DTH 275, 4-piece Hardware 200 Set

**Force 507 Preconfigured Sets**

**F507 Studio 1 Set**

20" BD, 14" SDS, 10" TT, 12" TT, 14" FT,  
2-Tom Holder, 4-piece Hardware Set

**F507 Stage 1 Set**

22" BD, 14" SDS, 12" TT, 13" TT, 16" FT,  
2-Tom Holder, 4-piece Hardware Set

**F507 Combo Set**

18" BD, 14" SDS, 10" TT, 12" TT, 14" FT,  
2-Tom Holder, 4-piece Hardware Set

**Force 1007 Finishes**

You can't go wrong here. High-quality, covered finishes in solid colors or natural finish point the way.

**Force 3007 Finishes**

The high-gloss lacquered finishes in the SONOR Force 3007 Series are absolute eye-catchers ... and now, with the new Sparkle and the high class Midnight Fade finishes, they provide even more accent.



11238 Maple

11237 Autumn Fade



11243 Red Maple

13008 Smooth Brown Burst

11240 Midnight Fade



30012 Orange Sparkle Fade

13010 Black Red Sparkle

13009 Smooth Red Burst

11234 Piano Black

**Force 2007 Finishes**

Tried-and-true finishes with a new look. Our high-gloss-lacquered surfaces literally bring fresh lustre to this series.



11234 Piano Black

11233 Birch



11235 Blue Fade

11236 Amber Fade

13006 Dark Green Burst

13007 Natural Fade



11229 Black

13005 Smooth Red

11232 Snow White

11230 Natural

# ARTIST SERIES



## THE VERY BEST SNARES

The exclusive SONOR Artist Snare Series combines the experience of the world's most talented drummers with SONOR's vast percussion instrument manufacturing expertise. This partnership has produced unparalleled snare drum models which meet even the most stringent demands.

From brass to steel or bronze, from maple to beech and birch, each and every Artist Snare Drum is a masterpiece in its own right. During the development process, design is as integral to the final product as sound quality. This attention to detail gives each Artist Snare Drum its own unmistakable character.

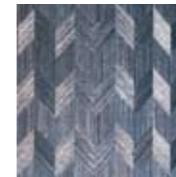
See for yourself on the following pages, or visit your SONOR instrument dealer to experience the tremendous quality of SONOR Artist Snares.



### AS 07 1205 AD in 10257 Art Design

A 12-ply birch shell with 12" x 5" size gives this snare drum a crisp, bright sound with plenty of attack. Whether using it as the main drum or as a side snare drum, the high pitched rim shots and sensitive response of the stainless steel snares ensure perfect sound performance.

Ideal for the short breaks in drum 'n' bass, hip-hop or electronic pop.



12" x 5" Artist Snare Drum, Art Design Finish, 12-ply Birch shell, 7 mm shell thickness, high gloss laquer finish, 16 tension rods, TuneSafe, throw-off snare action, chrome plated fittings with finish protectors, 18 steel wires



### AS 07 1305 EA in 10309 Earth

The main feature of this Artist Snare Drum is the massive, 27-layered (and hence 28 mm thick) beechwood shell; this gives the snare a 'hefty' sound. It is deep, with lots of 'bottom', and yet transparent.

Well suited for funk, fusion, jungle or electronic beats.

The gold-plated fittings, combined with a lustrous lacquer finish, are a real show stopper.



13" x 5" Artist Snare Drum, Earth Finish, 27-ply Beech shell, 28 mm shell thickness, high gloss laquer finish, 16 tension rods, TuneSafe, throw-off snare action, gold-plated fittings with finish protectors, 18 brass wires



### AS 07 1405 MB in 10323 Scandinavian Birch

With its thin Vintage Maple Shell, this Artist Snare Drum offers excellent resonance and a clear, transparent sound. The classic Scandinavian Birch finish and the gold-plated fittings give it a very high end look.

Its warm and rich sound make this snare drum quite versatile & naturally suited to a wide variety of musical styles.



14" x 5" Artist Snare Drum, Scandinavian Birch, 6-ply Vintage Maple shell, 4 mm shell thickness plus 2 mm Dynamic Edges, matt laquer finish, single flange hoops, 20 tension rods, TuneSafe, throw-off snare action, gold-plated fittings with protectors, 18 bronze wires



# ARTIST SERIES



14" x 6" Artist Snare Drum, Cottonwood Finish, 9-ply Medium Maple shell, 6 mm shell thickness, matt lacquer finish, die-cast hoops, 20 tension rods, TuneSafe, throw-off snare action, chrome plated fittings with finish protectors, 24 steel wires



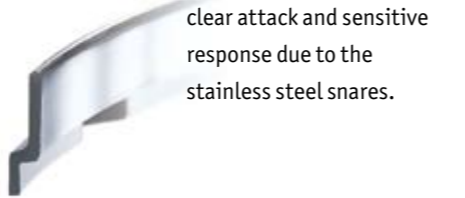
14" x 5" Artist Snare Drum, Brass, Brass shell, 1 mm shell thickness, protection lacquer, die-cast hoops, 20 tension rods, TuneSafe, throw-off snare action, gold-plated fittings with finish protectors, 24 brass wires



14" x 5" Artist Snare Drum, Chrome, Steel shell, 1 mm shell thickness, protection lacquer, 20 tension rods, TuneSafe, throw-off snare action, black-plated fittings with finish protectors, 2 x 8 steel wires

**AS 07 1406 CM in 10297 Cottonwood Maple**

Perfect as an all-round snare drum this model features a 9-ply maple light shell, a unique CM Cottonwood Satin finish and die-cast chrome plated rims. Producing a warm and full tone with a harmonic frequency, it also offers very clear attack and sensitive response due to the stainless steel snares.



**AS 07 1406 BRB Bronze Black**

The "heavyweight" of the Artist Series, this snare drum is made of a 6" cast bronze shell. Similar to the cymbal making process, the shell is made of one piece of bronze for best resonance and full projection. Offering maximum volume, it is the ideal drum for music requiring a sharp, loud and powerful snare.



14" x 6" Artist Snare Drum, Bronze, Bronze shell, 3 mm shell thickness, protection lacquer, die-cast hoops, 20 tension rods, TuneSafe, throw-off snare action, black-plated fittings with finish protectors, 24 bronze wires



**AS 07 1405 BG Brass Gold**

The best choice for drummers looking for explosive, bright sound with a high level of force and soft shading. Offering a broad sound with sensitive response for all playing dynamics, this snare drum also features gold-plated fittings.



**AS 07 1307 AM in 30009 Amboina**

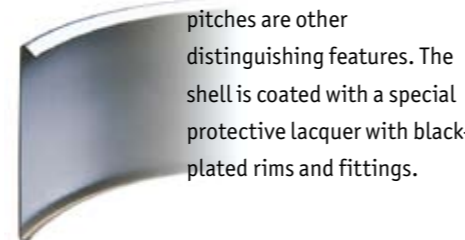
The latest addition to the Artist Snare Programme is the highly select 13" x 7" Amboina Snare. Constructed using a Heavy Maple Shell, this snare drum embodies true perfection, only found in SONOR's superb quality construction. The sound ranges from sensitive moments to brute force – characterizing this all-around instrument with soft, warm tone in the lower pitches along with balanced mediums and highs. Using one of the finest wood veneers (Amboina) combined with gold-plated fittings, this snare drum's look is breathtaking.

13" x 7" Artist Snare Drum, Amboina Finish, 12-ply Heavy Maple shell, 8 mm shell thickness, high gloss laquer finish, 16 tension rods, TuneSafe, throw-off snare action, gold-plated fittings with finish protectors, 18 brass wires



**AS 07 1405 SB Steel Black**

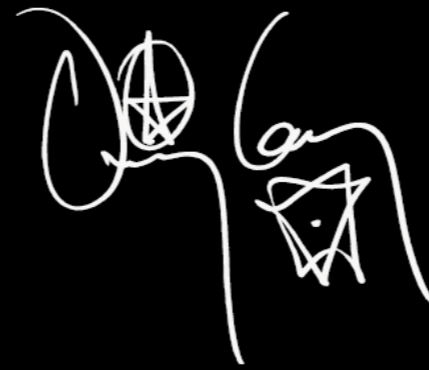
The heart of this Artist Snare Drum is a chromium-plated stainless steel shell. The perfect studio snare drum, it's also well suited to rock and funk drummers. Excellent rim shot sounds, a rich tone and a broad spectrum of medium-range and high pitches are other distinguishing features. The shell is coated with a special protective lacquer with black-plated rims and fittings.



# DANNY CAREY SIGNATURE SNARE DRUM



DANNY CAREY > TOOL



SIGNATURE SERIES

SNARE DRUMS

## THE DANNY CAREY SIGNATURE SNARE DRUM

SONOR has teamed up with one of the world's greatest and most renowned Drummers, Danny Carey to create a One-of-a-kind Signature Snare Drum Model. At the same time, it is the birth of a complete new product line of true Signature Snare Drums that will be updated continuously.

Danny is a proud member of the worldwide SONOR artist family since 1992, with a history playing SONOR since 1982 and has gained a reputation as a Drum god over the years. Together with Tool, a band absolutely unique and true to itself, he has travelled the world and recorded six albums since the band was found in 1990. The Grammy nominated band has reached multi-platinum status all over the globe and is known for a loyal and huge fan base. He also appeared on albums from Pigmy Love Circus, Green Jelly, Zaum, Collide to name a few and appears with his band "Volto!" every now and then in the Los Angeles area.

Danny is a huge fan of SONOR's early and current Bronze Snare Drum models. He is still yet to be seen with some famous and sought-after HLD 590 Signature 14x8" Cast Bronze Snare Drum, or the current – until now the only Bronze Model, Artist Series 14x6" Bronze Snare Drum.

In 2008, SONOR and Danny teamed up to create a new Snare Drum that is all about Danny and his sound, the Tool sound. The Snare Drum is made out of a 1 mm Bronze Shell and comes with Artist Series Snare Drum Style lugs. The 2.3 mm Power Hoops allow the Drum to breath



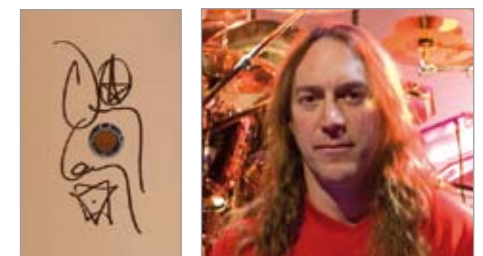
open. All hardware comes in Chrome. With a diameter of 14" and a depth of 8", it is truly homage to the "Vintage" Signature Line Snare Drum that has been with Danny throughout his career. The shell is covered by unique talisman symbols between the lugs. Also engraved around the air hole is Danny's signature that gives his drum his final, personal touch.

Says Danny, test driving the first Prototype in summer of 2008: "The Snare Drum has a powerful, but still versatile sound". The Snare can be tuned high or low without losing the specific, warm Bronze sound in combination with the full bodied shell sound. When tuned high, a nice crack is added, tuned low, you find yourself in Danny's sound sphere.

### SSD 09 1408 DC

#### Signature Snare Drum Danny Carey

14" x 8" Signature Snare Drum, Bronze, covered with talisman symbols between the lugs, Bronze shell, 1 mm shell thickness, protection lacquer, 2.3 mm Power hoops, 20 tension rods, TuneSafe, throw-off snare action, chrome plated fittings with finish protectors, 20 steel wires



PHIL RUDD > AC/DC

# PHIL RUDD SIGNATURE SNARE DRUM



## THE PHIL RUDD SIGNATURE SNARE DRUM

With over 30 years of deep relationship, SONOR and Phil Rudd teamed up to create a unique and exclusive Signature Snare Drum Model.

Phil's history with AC/DC is as long as his history with SONOR Drums, starting in the early 1970's. The 5-piece Rock and Roll combo is without no doubt one of the most important and influential Rock bands and at the same time one of the most successful Rock bands of all time. More than three decades into a career that shows no signs of slowing down or letting up, AC/DC, like electricity itself, provides the world with an essential source of power and energy. Since forming in 1973, AC/DC's high voltage rock 'n' roll has flowed out into the world via consistently sold-out concert tours and global sales totalling more than 200 million albums and counting.

Phil, a born Australian is no less one of the most important persons in the drum world, having influenced thousands of drummers all over the globe. His playing style is truly unique and a trademark of its own and the AC/DC sound.

In 2009, SONOR and Phil started to work on a new Signature Model that is all about Phil's sound, and at the same time celebrating the 30+ years of relationship. The Snare Drum is based on Phil's all-time favourite Snare Drum, the SONOR Horst Link Signature Brass model, while adding exciting new features and face. The final prototype Snare Drum was presented to Phil in early 2009 during the "Black Ice" World Tour and used from thereon.



*"I'M ALWAYS LOOKING FOR A FAT INTIMIDATING SOUND THAT'S PUNCHY WITH AN EDGE ON IT"*

*Phil Rudd AC/DC*

The Snare Drum is made out of a 1 mm Chrome-over-Brass Shell and comes with the latest Double-Lugs that include the internal Tune-Safe feature. A very important feature for Phil, stating "Huge concert tours like the Black Ice tour require fully functional gear, and the TuneSafe feature has been a stable one when it comes to the ability of keeping the drums in tune".

Die Cast Hoops add a nice crack, while the sound overall is to be described best as focused, dry and cutting. All hardware comes in Chrome. With a diameter of 14" and a depth of 5", it is truly homage to the Horst Link Signature Model Drum that has been with Phil during the past years on worldwide tours and in Studio. Besides the Signature Badge, Phil's Signature is engraved on a 1980's Re-Issue of the Signature Badge, adding a "Vintage" touch.

**SSD 09 1405 PR**  
**Signature Snare Drum Phil Rudd**  
14" x 5" Signature Snare Drum, Chrome over Brass, equipped with a signed Re-Issue of the 1980's Signature Badge, Brass shell, 1.2 mm shell thickness, Artist Series die-cast hoops, 20 tension rods, TuneSafe, throw-off snare action, chrome plated shell hardware, 20 steel wires



# DELITE SERIES

# S CLASSIX SERIES

Photos: Jordan Snider

**Delite Snare Drums**

TuneSafe, fittings with finish protectors

**DL 1205 SDW** 12" x 5" Maple Snare, 9-ply Vintage Maple shell, 4 mm shell thickness plus 2 mm Dynamic Edges, 16 tension rods, 2.3 mm power hoops



DL 1205 SDW

**DL 1404 SDWD** 14" x 4.25" Maple Snare, 9-ply Vintage Maple shell, 4 mm shell thickness plus 2 mm Dynamic Edges, 20 tension rods, die-cast hoops



DL 1405 SDWD

**DL 1405 SDWD** 14" x 5" Maple Snare, 9-ply Vintage Maple shell, 4 mm shell thickness plus 2 mm Dynamic Edges, 20 tension rods, die-cast hoops



DL 1405 SDBD

**DL 1406 SDWD** 14" x 6" Maple Snare, 9-ply Vintage Maple shell, 4 mm shell thickness plus 2 mm Dynamic Edges, 20 tension rods, die-cast hoops



DL 1406 SDBD

**DL 1405 SDBD** 14" x 5" Brass Snare, Brass shell, 20 tension rods, die-cast hoops

**DL 1405 SDSD** 14" x 5" Steel Snare, Steel shell, 20 tension rods, die-cast hoops

**DL 1406 SDBD** 14" x 6" Brass Snare, Brass shell, 20 tension rods, die-cast hoops

**Throw-off Action**  
Delite Snare drums feature the SONOR throw-off snare action.



**S Classix Snare Drums**

TuneSafe, fittings with finish protectors

**SC 10 1205 SDW** 12" x 5" Birch Snare, 9-ply Birch shell, 5 mm shell thickness, 16 tension rods, power hoops\*



SC 10 1205 SDW

**SC 10 1305 SDW** 13" x 5" Birch Snare, 9-ply Birch shell, 5 mm shell thickness, 16 tension rods, power hoops\*



SC 10 1305 SDW

**SC 10 1405 SDW** 14" x 5" Birch Snare, 9-ply Birch shell, 5 mm shell thickness, 20 tension rods, power hoops\*



SC 10 1405 SDW

**SC 10 1405 SDWD** 14" x 5" Birch Snare, 9-ply Birch shell, 5 mm shell thickness, 20 tension rods, die-cast hoops



SC 10 1405 SDWD

**SC 10 1406 SDW** 14" x 6" Birch Snare, 9-ply Birch shell, 5 mm shell thickness, 20 tension rods, power hoops\*



SC 10 1406 SDW

**SC 10 1406 SDWD** 14" x 6" Birch Snare, 9-ply Birch shell, 5 mm shell thickness, 20 tension rods, die-cast hoops



**NEW** SC 10 1406 SDWD

**SC 10 1405 SDB** 14" x 5" Brass Snare, Brass shell, 20 tension rods, power hoops\*

**SC 10 1405 SDS** 14" x 5" Steel Snare, Steel shell, 20 tension rods, power hoops\*  
\* = 2.3 mm



SC 10 1405 SDB

**Throw-off Action**  
S Classix Snare drums feature the SONOR throw-off snare action.



**NEW**



SC 10 1405 SDS

# SNARE DRUMS

## FORCE SERIES



F37 1002 SDJ



F37 1005 SDWP



F37 1205 SDWP



F37 1307 SDW



F27 1405 SDW



F17 1405 SDS



F37 1405 SDS



F37 1405 SDW



F27 1405 SDS

**Jungle Snare**

**Tom Holder Adapter**

For More Leg Room and more flexibility in positioning your Jungle Snare Drum.



JTH

**Force 3007 Snare Drums**

9-ply Maple shell, 7 mm shell thickness, available in all Force 3007 finishes

**F37 1005 SDWP** 10" x 5" Maple Snare,

12 tension rods, TuneSafe, 2.3 mm power hoops, prism clamp

**F37 1205 SDWP** 12" x 5" Maple Snare,

12 tension rods, TuneSafe, 2.3 mm power hoops, prism clamp

**F37 1307 SDW** 13" x 7" Maple Snare,

16 tension rods, TuneSafe, 2.3 mm power hoops

**F37 1405 SDW** 14" x 5.5" Maple Snare,

20 tension rods, TuneSafe, 2.3 mm power hoops

**F37 1405 SDS** 14" x 5.5" Steel Snare,

Steel shell, 20 tension rods, TuneSafe, 2.3 mm power hoops

**F37 1002 SDJ** 10" x 2" Jungle Snare,

Natural Wood shell, 16 Jingles

**JTH** Jungle Snare Tom Holder

Adapter for Single Tom Stand adjustment

**Force 2007 Snare Drums**

**F27 1405 SDW** 14" x 5.5" Birch Snare, 9-ply Birch shell, 7 mm shell thickness, 16 tension rods, TuneSafe, available in all Force 2007 finishes

**F27 1405 SDS** 14" x 5.5" Steel Snare,

Steel shell, 16 tension rods, TuneSafe

**Force 1007 Snare Drum**

**F17 1405 SDS** 14" x 5.5" Steel Snare,

Steel shell, 16 tension rods, TuneSafe

SoundWire is SONOR's answer to any drummer looking for new ways to enhance their snare drum sound. With 3 different metals (steel, brass and bronze) and 24 snare wire variations plus the option of string or strap mount, SoundWire offers unlimited sonic choices.

Each set of snares comes in an attractive wood box that ensures best protection.



SONOR SoundWire snares feature specially designed end plates that ensure perfect snares-to-head contact. Rounded plate edges prevent head damage during snare tightening.



Sample: SW 1318 S



Sample: SW 1316/2 B



Sample: SW 1318 MS 06

**Steel Snare Wires**

**SW 1018 S** for 10", 18 Wires  $\varnothing$  0.5 mm

**SW 1218 S** for 12", 18 Wires  $\varnothing$  0.5 mm

**SW 1318 S** for 13", 18 Wires  $\varnothing$  0.5 mm

**SW 1418 S** for 14", 18 Wires  $\varnothing$  0.5 mm

**SW 1424 S** for 14", 24 Wires  $\varnothing$  0.5 mm

**SW 1316/2 S** for 13", 2 x 8 Wires  $\varnothing$  0.5 mm

**SW 1416/2 S** for 14", 2 x 8 Wires  $\varnothing$  0.5 mm

**Bronze Snare Wires**

**SW 1018 B** for 10", 18 Wires  $\varnothing$  0.5 mm

**SW 1218 B** for 12", 18 Wires  $\varnothing$  0.5 mm

**SW 1318 B** for 13", 18 Wires  $\varnothing$  0.5 mm

**SW 1418 B** for 14", 18 Wires  $\varnothing$  0.5 mm

**SW 1424 B** for 14", 24 Wires  $\varnothing$  0.5 mm

**SW 1316/2 B** for 13", 2 x 8 Wires  $\varnothing$  0.5 mm

**SW 1416/2 B** for 14", 2 x 8 Wires  $\varnothing$  0.5 mm

**Brass Snare Wires**

**SW 1318 MS 05** for 13", 18 Wires  $\varnothing$  0.5 mm

**SW 1318 MS 06** for 13", 18 Wires  $\varnothing$  0.6 mm

**SW 1418 MS 05** for 14", 18 Wires  $\varnothing$  0.5 mm

**SW 1418 MS 06** for 14", 18 Wires  $\varnothing$  0.6 mm

**SW 1424 MS 05** for 14", 24 Wires  $\varnothing$  0.5 mm

**SW 1424 MS 06** for 14", 24 Wires  $\varnothing$  0.6 mm

**SW 1316/2 MS** for 13", 2 x 8 Wires  $\varnothing$  0.5 mm

**SW 1416/2 MS** for 14", 2 x 8 Wires  $\varnothing$  0.5 mm

**Stainless Steel Snare Set**

These are typical all-around snares. The alloy of the 0.5 mm strong snares containing V2A steel with 12% chrome ingredient features a tensile strength of 1800/2000 N/mm\*.

These snares, the strongest within SONOR's SoundWire series, are built for the most demanding players. They offer precise attack and a high dynamic range.

\* N/mm = 1 kg = 9.8 N tensile strength/mm

**Bronze Snare Set**

This snare sound has reduced overtones and can be describe as mellow. The bronze alloy consists of 93% copper and 7% tin.

The 0.6 mm strong snare strands feature 1000/1300 N/mm\* tensile strength and are still classified as "soft" due to their elasticity. This allows for longer decay of the snare vibration. Bronze snares are ideally suited for orchestral use and playing with brushes or rods.

**Brass Snare Set**

At a given tension these snares produce brilliant, crisp snare sounds with defined short attack. Brass is an alloy consisting of 64.5% copper and 35.5% zinc. The 0.5 mm strong snare strands are cold molded thus reaching a maximum of tensile strength and hardness (950/1200N/mm\*), with reduced elasticity. Reggae or pop drummers crave the bright sound of brass SoundWire snares.

# GIANT STEP



Photo: Alex Solca

### MAXIMUM SPEED AND POWER

SONOR Giant Step bass drum pedals are the best tool for discriminating drummers refusing to sacrifice any musical freedom.

As a state-of-the-art pedal, Giant Step delivers an optimum feel for the music along with speed and handling. The extraordinary design and numerous enhancement options elevate Giant Step pedals to a class unto themselves.

From the Target Point foot board to the docking station, every aspect of the Giant Step series has been designed with the utmost attention to detail. A choice of Single, Double and Middle Pedals allows every drummer to find the perfect 'Giant Step.'



### Single Pedal – Just Faster

Another gem in the Giant Step series! Equipped with all the important features like: Target Point, Rotation Pendulum, Smart Connect and Docking Station.



### Anti Slip Rubber – There's No Escape

Get a grip on any surface! The bass drum plate has an anti-slip rubber profile with self-adhesive velcro.

GSP 3 Single Pedal



# GIANT STEP

### Smart Connect System – The Flexible Pedal Attachment

The "Smart Connect" System means quick and effortless attachment of the pedal with an adjustable ball clamp through a firm lever mechanism. A cylindrical axle connection neutralizes any possible tensions traditionally caused by different bass drum angle positions.



Docking Station



# GIANT STEP



GDPL 3 Double Pedal, left



GDPR 3 Double Pedal, right

### Double Pedal – Even Faster

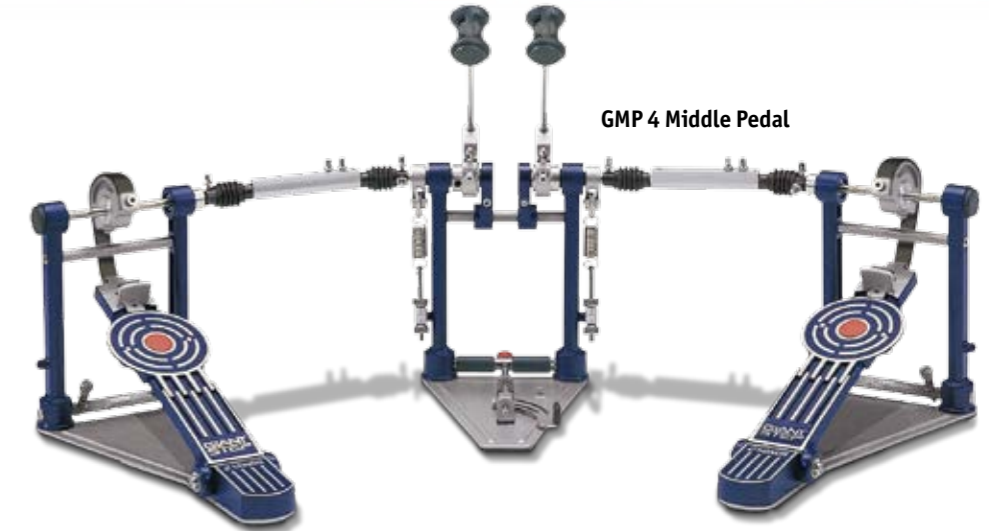
This pedal effectively demonstrates the modular system of the Giant Step series. Separate modules of the Single Pedal make up the Double Pedal, featuring extremely smooth action. The connecting axle is length adjustable, and the high quality cross joints are covered by rubber housings.

### Middle Pedal – Perfect at Centre Stage

The Giant Step Middle Pedal is a Double Pedal with perfect symmetrical action. This translates into flexible setups with ideal snare drum center position and significantly enhanced technique. More flexible drum set ups and improved positioning of pedals and drums make this pedal a real asset.



GMP 4 Middle Pedal



### Giant Step Bag – Complete Protection / Safe Transport

All Giant Step Pedals are supplied standard with a heavy duty nylon carrying bag.



All Giant Step pedals are equipped with a chain drive. An exchangeable strap is also included.

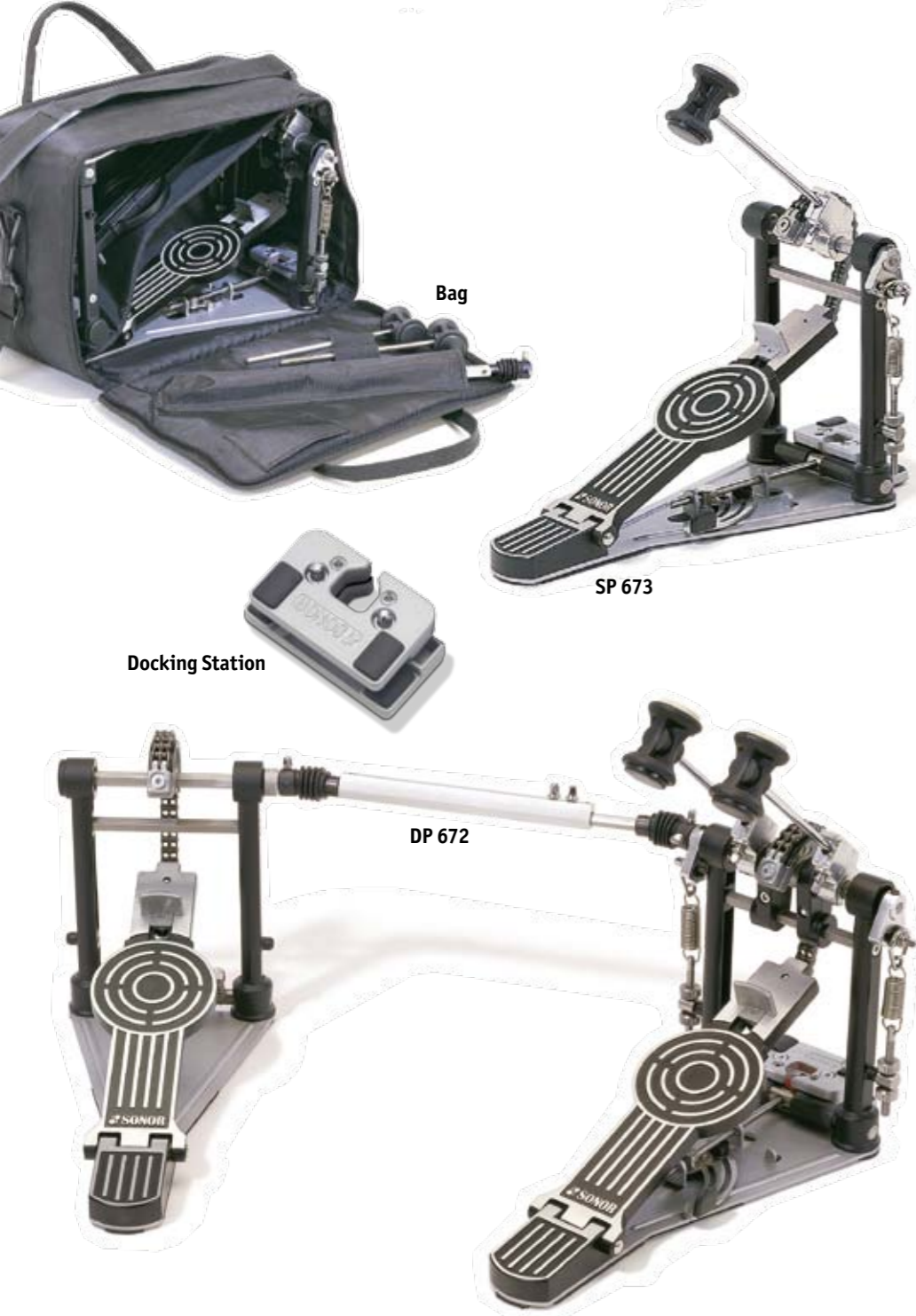
Straps, chains, springs, and beaters are also available.



### Giant Step Reference

GSP 3	Giant Step Single Pedal
GDPR 3	Giant Step Double Pedal, right
GDPL 3	Giant Step Double Pedal, left
GMP 4	Giant Step Middle Pedal
GSDS	Giant Step Docking Station
GPB	Giant Step Bag
GSC	Giant Step Silent Chain with Chain-Lock
GSS	Giant Step Silent Strap with Strap-Lock
GSR	Giant Step Spring Tension Adjustment, regular
GSH	Giant Step Spring Tension Adjustment, heavy
SCH 27	Multi Beater, Felt/Rubber/Wood/Acryl
SCH 28	Two Way Beater, Felt/Plastic
SCH 20	Bass Drum Beater, Felt, cylindrical

# BASS DRUM BD PEDALS



**600 Series Bass Drum Pedal Features**

- New bass drum pedal utilizing Giant Step design
- Smooth, fast pedal action due to unique SONOR construction
- Smart Connect System with Docking Station for quick and reliable bass drum mounting
- Two way beater for choice of attack sound
- Adjustable toe stop

**Bass Drum Pedals 600 Series**

**SP 673** Bass Drum Single Pedal, with bag, Smart Connect System, Docking Station, two way beater, adjustable toe stop

**DP 672** Bass Drum Double Pedal, with bag, Smart Connect System, Docking Station, two way beater, adjustable toe stop

**Bass Drum Pedals 400 Series**

**SP 473** Bass Drum Single Pedal, with support board and adjustable toe stop

**DP 472 R** Bass Drum Double Pedal, right, with bag, with support board, adjustable toe stop

**DP 472 L** Bass Drum Double Pedal, left, with bag, with support board, adjustable toe stop, for left-footed players



# HARDWARE

## INTRO

RICHARD BAILEY > INCOGNITO



# 600 SERIES

### 600 Series

The pinnacle of SONOR hardware. Offering maximum reliability and optimum handling with lots of individual components. Professional down to the smallest detail!

### 400 Series

Professional, road-ready hardware at an unbeatable price. Equipped with lots of individual components, the 400 Series is easy to set up, adjust and tear down.

### 200 Series

SONOR's basic hardware series is characterized by good handling with professional appearance. The hardware standard with lots of grip for added playing confidence.

### 100 Hardware Series

Very light hardware for the discerning beginner, or if the goal is less weight to carry.

### 3-Section Clamp – Enormous Support, Very Little Effort

The 3-section clamp diffuses the force around three sides of a stand rod like no other clamp does! Plus, it can be secured easily.



3-Section Clamp  
DE pat. 1023 57 515

### CBS 672 MC Cymbal Boom Stand,

400 mm boom arm length,  
360° rotation

### MBS 673 MC Mini Boom Stand

with retractable boom arm,  
485 mm boom arm length



### Retractable Boom Arm - Two in One

Completely retractable cymbal boom arm converts the mini boom stand to a straight cymbal stand.

### Adjustable Leg<sup>1</sup> - Fit Every Configuration

The independently adjustable base leg of the hardware 600 suits each drummer's individual set-up.



### The new 600 Series Hardware Memory Clamp



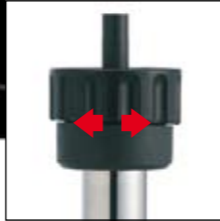
MBS 673

CBS 672



1) DE pat. 44 00 151 / JP pat. 2 564 110 / US pat. 5.509.629

# HARDWARE 600 SERIES



**Bottom Cymbal Tilter – Secure-Fastening Massive and Flexible**  
7-step, easy to operate cymbal tilter



CBA 671 MC

STS 676 MC

DTS 675 MC

CTS 679 MC

DCS 678 MC

HH 684 MC

HH 674 MC

- DTS 675 MC** Double Tom Stand,  
2 tom arms with ball clamp<sup>1</sup>
- STS 676 MC** Single Tom Stand  
with tom arm with ball clamp<sup>1</sup>
- CTS 679 MC** Cymbal Tom Stand  
with tom arm with ball clamp<sup>1</sup>  
and cymbal boom arm
- DCS 678 MC** Double Cymbal Stand  
with two cymbal boom arms
- HH 674 MC** Hi-Hat Stand (see HH 684)
- HH 684 MC** Two-Leg Hi-Hat Stand  
with adjustable spring tension,  
swivel foot board, retractable,  
with toe stop, 7-step bottom  
cymbal tilter, legs convertible  
from rubber to metal spurs

- SS 677 MC** Snare Drum Stand  
with quick release lever
- DT 670** Drummer's Throne,  
round seat, with spindle,
- DT 680** Drummer's Throne,  
saddle seat, with spindle,  
with Drum Key Holder
- XH 674** X-Hat  
with adjustable spring tension,  
7-step bottom cymbal tilter
- STH 674 MC** Single Tom Holder  
with 3-section clamp and  
tom arm with ball clamp<sup>1</sup>
- DTH 675 MC** Double Tom Holder  
with 2 tom arms with ball clamp<sup>1</sup>

- CBA 671 MC** Cymbal Boom Arm,  
400 mm boom arm length,  
360° rotation
- TA 678 MC** Tom Arm with ball clamp<sup>1</sup>
- MC 676** Multi Clamp



STH 674 MC

DTH 675 MC

TA 678 MC

XH 674

MC 676



SS 677 MC

DT 670

DT 680



**Quick Release Lever – Couldn't Be Easier!**  
No more complicated screws ever again!  
Simply lay the snare drum on the stand and flip the lever – that's it.

<sup>1</sup>) DE pat. 43 33 913 / GB pat. 2 273 043 / US pat. 5.803.642

# HARDWARE

## 600 SERIES

### BASIC ARM SYSTEM



Photo: Norbert Saemann

#### Freedom, flexibility, function

The Basic Arm System utilizes a vast array of arms, ratchets and adapters to create the ultimate in flexibility, form and function, allowing you to create your own customized individual hardware setup.

The Basic Arm System is divided into the Basic Arm 19 and Basic Arm 12, reflecting the variation in tube diameters. We utilize identical ratchets overall for ease of compatibility between the components.

The details are too many to mention, look at the following practical examples or experiment and design the Basic Arm System of your own.



BA19-BDS MC

BA19-BSS MC

#### BASIC ARM 12



BA12-BR

BR 12 MC

BA12-L

BA12-S

#### BASIC ARM 19



BA-BC

BA-CH

BA-PA

BA-TA

BA-MA

BA19-BR

BA19-S MC

BA19-M MC

BA19-L MC

BA-TB

BA-CR

BA19-BDA

#### Basic Arm 19

- BA19-S MC Basic Arm 19, short, 150 mm
- BA19-M MC Basic Arm 19, medium, 220 mm
- BA19-L MC Basic Arm 19, long, 400 mm
- BA19-BR Basic Arm 19 Basic Raste
- BA19-BDA Basic Arm 19 Bass Drum Adapter
- BA19-BSS MC Basic Arm 19 Single Stand
- BA19-BDS MC Basic Arm 19 Double Stand

#### Basic Arm 12

- BR12 MC Basic Rack, with Arm 485 mm
- BA12-S Basic Arm 12, short, 285 mm
- BA12-L Basic Arm 12, long, 485 mm
- BA12-BR Basic Arm 12 Basic Ratchet

#### Basic Arm System

- BA-CH Basic Arm Cymbal Holder
- BA-PA Basic Arm Percussion Adapter
- BA-TA Basic Arm Tom Adapter
- BA-BC Basic Arm Basic Clamp
- BA-CR Basic Arm Connection Ratchet
- BA-TB Basic Arm Tele Boom
- BA-MA Basic Arm Microphone Adapter

# HARDWARE

## 600 SERIES

### BASIC ARM SYSTEM



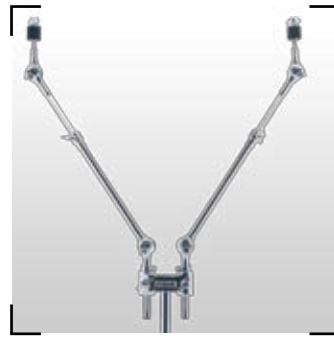
## BASIC ARM SAMPLES



BA-BC, BA-CR, BA12-BR (3x),  
BA12-L, BA-CH, BA-PA



BR12, BA12-BR (5x), BA-CH (3x),  
BA-PA (2x)



BA19-BDS, BA19-S (2x), BA-TB (2x),  
BA-CH (2x)



BA-BC, BA19-BR, BA19-M, BA19-L,  
BA-CH



BA-BC, BA19-BR, BA19-S, BA19-M,  
BA-BC



BA-BC, BA19-BR, BA19-S, BA19-M,  
BA-TA



BA 19-BSS, BA19-S, BA19-BR, BA19-M,  
BA-BC



BA-BC, BA19-BR, BA19-M, BA-BC



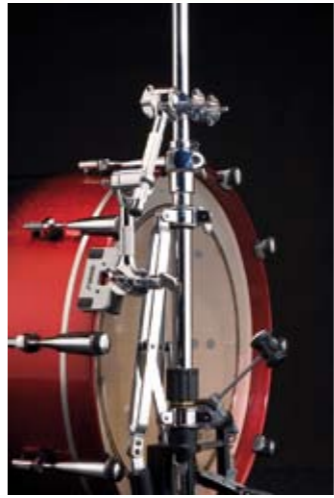
BA-BC, BA19-BR, BA19-S, BA-TA



BA-BC, BA-PA



BA19-BDA, BA-CR, BA19-BR,  
BA19-M, BA-BC



BA19-BDA, BA-CR, BA19-BR,  
BA19-M, BA-BC



BA19-BDA, BA-CR, BA19-BR,  
BA19-M, BA-BC



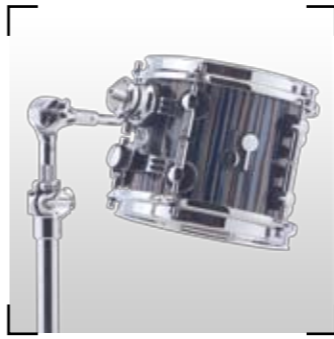
BA19-BDA, BA-PA



BA19-BDA, BA19-S, BA19-BR, BA-PA



BA19-BDA, BA-CR, BA-PA



BA19-BSS, BA19-S, BA-TA



BA19-BSS, BA19-S, BA19-BR,  
BA19-S, BA-TA



BA19-BSS, BA19-S, BA19-BR,  
BA19-S, BA-PA



CBS 672 Cymbal Boom Stand with  
BA19-BR, BA19-L



CBS 672 Cymbal Boom Stand with  
BA-BC, BA-CR, BA12-BR, BA12-L,  
BA12-BR (2x), BA-MA (2x)



Easy and clever:  
Depending on the combination of our  
Basic Arm components simply remove  
a guide ring.



Simply combine and assemble our Ba-  
sic Arm components.

# HARDWARE

## 400 SERIES



**3-Section Clamp**  
The 3-section clamp diffuses the force around three sides of a stand rod like no other clamp does! Plus, it can be secured easily.



**Drum Key Holder – Your Tuning Key Is Always Handy!**  
With the innovative Drum Key Holder, the prolonged search for a drum key is a thing of the past. Always handy ... right under your drummer's throne.



- CS 471** Cymbal Stand
- CBS 472** Cymbal Boom Stand, 580 mm boom arm length, with counter weight
- MBS 473** Mini Boom Stand
- DTS 475** Double Tom Stand, 2 tom arms with ball clamp<sup>1</sup>
- STS 476** Single Tom Stand with tom arm with ball clamp<sup>1</sup>

- DCS 478** Double Cymbal Stand with two cymbal boom arms
- CTS 479** Cymbal Tom Stand with tom arm with ball clamp<sup>1</sup> and cymbal boom arm
- HH 484** Hi-Hat Stand with adjustable spring tension, swivel foot board, retractable, with toe stop, 7-step bottom cymbal tilter

- TA 478** Tom Arm with ball clamp<sup>1</sup>
- RTA 479** Rack Tom Arm with ball clamp<sup>1</sup>
- XH 474** X-Hat with adjustable spring tension, 7-step bottom cymbal tilter
- MH 475** Multi Holder for X-Hat

**Hi-Hat – The Eye-Catcher**  
New with hex rod, no more loosening the top cymbal!

STS 476

DTS 475

MBS 473

CBS 472

CTS 479

MBA 471

DCS 478

CS 471

HH 484

SS 477

DT 470

STH 474

DTH 475

MH 475

XH 474

TA 478

RTA 479

1) DE pat. 43 33 913 / GB pat. 2 273 043 / US pat. 5.803.642

# HARDWARE

## 200 SERIES & SETS



MC 276

- CS 271 Cymbal Stand
- MBS 273 Mini Boom Stand
- HH 274 Hi-Hat Stand

**Hi-Hat – The Eye-Catcher**  
In polished-aluminium – now with a rotating footboard, too.



CS 271

MBS 273

HH 274

TA 278 B

STH 274

DTH 275

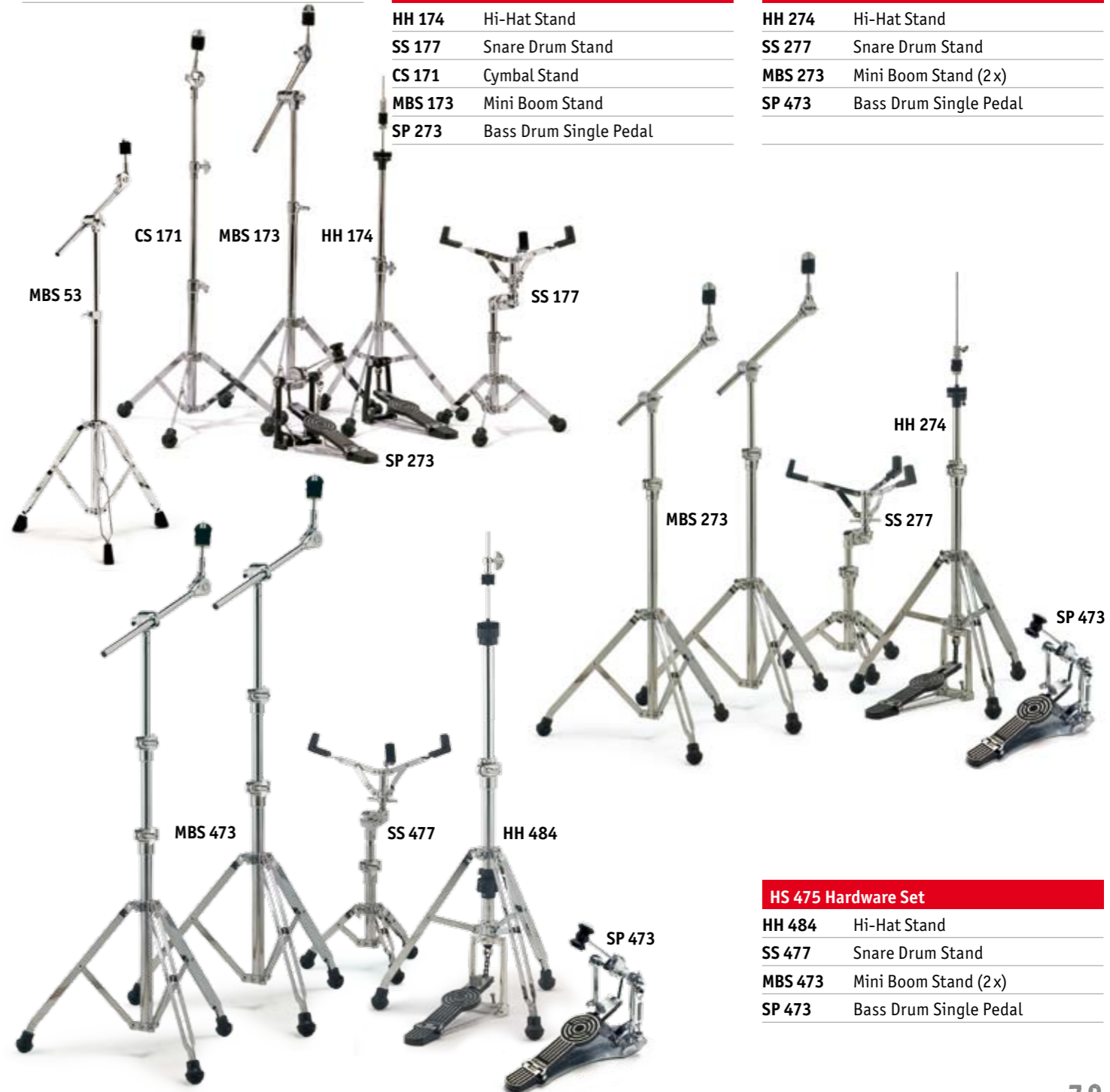
SS 277

DT 270

- SS 277 Snare Drum Stand
- DT 270 Drummer's Throne, round seat, extractable tube, with Drum Key Holder
- STH 274\* Single Tom Holder with 3-section clamp and tom arm with ball clamp
- DTH 275\* Double Tom Holder with 2 tom arms with ball clamp
- TA 278\* Tom Arm with ball clamp
- MC 276 Multi Clamp

\* also available in Black

- MBS 53 Mini Boom Stand



MBS 53

CS 171

MBS 173

HH 174

SP 273

SS 177

MBS 273

HH 274

SS 277

SP 473

MBS 473

SS 477

HH 484

SP 473

**HS 174 Hardware Set**

- HH 174 Hi-Hat Stand
- SS 177 Snare Drum Stand
- CS 171 Cymbal Stand
- MBS 173 Mini Boom Stand
- SP 273 Bass Drum Single Pedal

**HS 275 Hardware Set**

- HH 274 Hi-Hat Stand
- SS 277 Snare Drum Stand
- MBS 273 Mini Boom Stand (2x)
- SP 473 Bass Drum Single Pedal

**HS 475 Hardware Set**

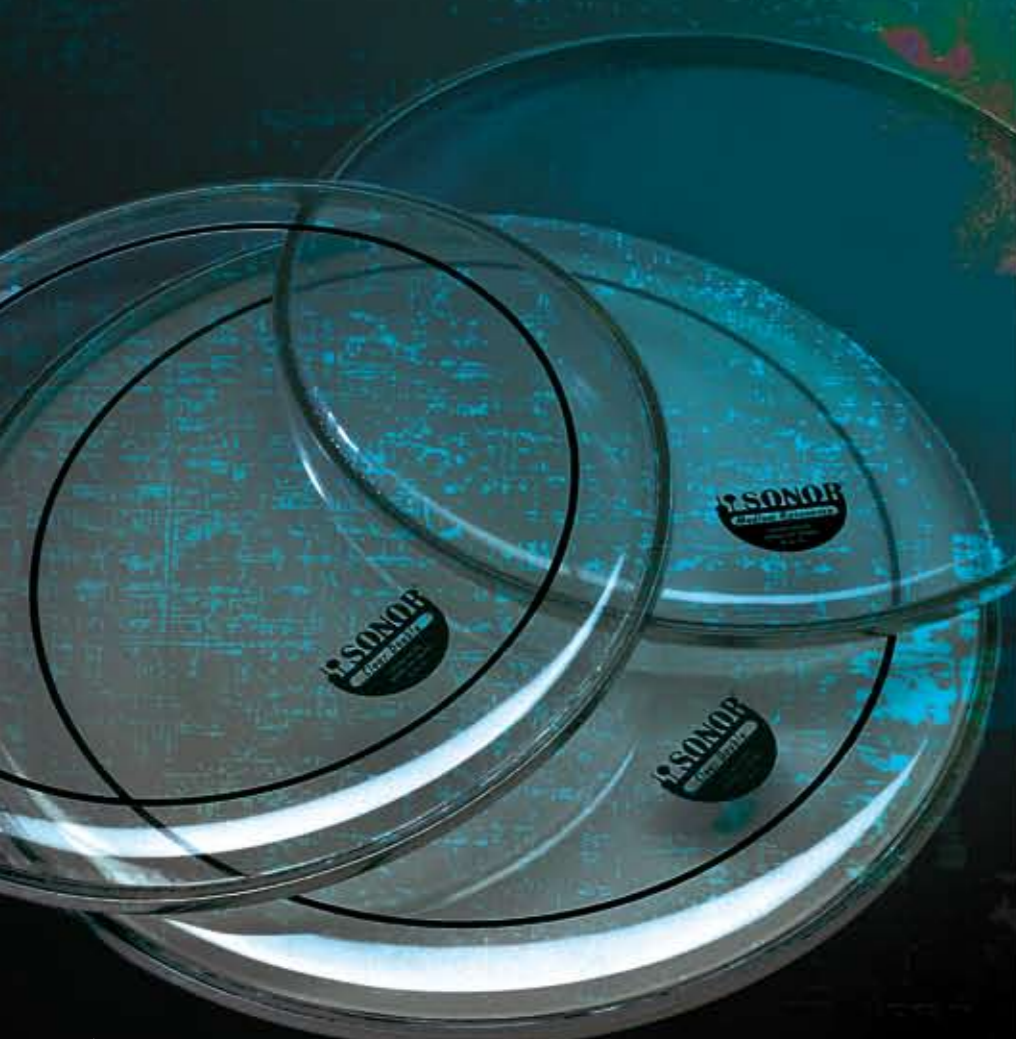
- HH 484 Hi-Hat Stand
- SS 477 Snare Drum Stand
- MBS 473 Mini Boom Stand (2x)
- SP 473 Bass Drum Single Pedal



# ACCESSORIES

## OFTEN, IT'S THE LITTLE THINGS MAKE THE DIFFERENCE

SONOR Accessories cover all of the important and useful accessories and replacement parts you'll ever need. From cymbal clamps to practice pads to equipment-care products, we offer a wide variety to help you keep enjoying your passion – drumming – for years to come!



- CC 5215** Cymbal Clamp, plastic, single unit
- CC 5215/6** Cymbal Clamp, plastic, six pack
- PP 9300** Practice Pad for 14" Snare Drum, rubber
- SL 5205** Super Lock Tuning Safe Set, 20 pieces
- BDE** 16"/18" Bass Drum Elevation with spurs extension, Prism Clamp with drilling template, Jungle adapter

### Replacement Part Set and Drum Care Set

- EK 9200** Replacement Part Set with 5 washers, 1 pedal spring, 1 fiber disc, 2 rubber hoses, 5 felt washers and 1 nylon string
- DC 9210** Drum Care Set with chrome polish, machine oil, lube and cleaning cloth in nylon carrying zip bag

### Bass Drum Beaters

- SCH 20** Bass Drum felt headed beater with conical shape
- SCH 27** Multi Beater with 4 exchangeable playing surfaces: felt, wood, rubber, acrylic
- SCH 28** Two Way Beater, with two playing surfaces: felt and plastic

### Tuning Keys

- DK 5070** Wrench Key (slotted rods)
- DK 5071** Tuning Key, long (slotted rods)
- DK 5072** Tuning Key, short (slotted rods)
- DK 5073** Tuning Key (square headed rods)
- MK** Multi Key (slotted/square heads rods)
- DKH** Drum Key Holder

Spare parts are available: [www.sonor.com](http://www.sonor.com)



CC 5215



PP 9300



SL 5205



BDE



EK 9200



DKH



DC 9210



SCH 20



SCH 27



SCH 28



ML-R/ML-L

**Memory Locks – Perfectly Positioned, Every Time**  
for SONOR bass drum spurs and tom holders with T-Bar and H-Bar



### 3-Section Memory Clamps

with plastic inlay to protect the tube surface available for **19.1 mm** tube diameter  
**25.4 mm** tube diameter  
**28.5 mm** tube diameter



MK



DK 5073



DK 5071

DK 5072

DK 5070



# DRUMHEADS - STICKS



Photo: Neal Burstyn

**White Medium - Batter Head**

White, coated, single ply, medium

**Tom Toms | Floor Toms | Snare Drums**

WM 08 = 8"    WM 10 = 10"    WM 12 = 12"

WM 13 = 13"    WM 14 = 14"    WM 15 = 15"

WM 16 = 16"    WM 18 = 18"

**Bass Drums**

WM 18 B = 18"    WM 20 B = 20"

WM 22 B = 22"    WM 24 B = 24"

**Clear Medium - Batter/Resonance Head**

Transparent, single ply, medium

**Tom Toms | Floor Toms**

CM 08 = 8"    CM 10 = 10"    CM 12 = 12"

CM 13 = 13"    CM 14 = 14"    CM 15 = 15"

CM 16 = 16"    CM 18 = 18"

**Bass Drums**

CM 18 B = 18"    CM 20 B = 20"

CM 22 B = 22"    CM 24 B = 24"

**Clear Heavy - Batter Head**

Transparent, double ply, heavy

**Tom Toms | Floor Toms**

CH 08 = 8"    CH 10 = 10"    CH 12 = 12"

CH 13 = 13"    CH 14 = 14"    CH 15 = 15"

CH 16 = 16"    CH 18 = 18"

**Bass Drums**

CH 18 B = 18"    CH 20 B = 20"

CH 22 B = 22"    CH 24 B = 24"

**Clear Double - Batter Head**

Transparent, double ply, XP heavy

**Tom Toms | Floor Toms**

CD 08 = 8"    CD 10 = 10"    CD 12 = 12"

CD 13 = 13"    CD 14 = 14"    CD 15 = 15"

CD 16 = 16"    CD 18 = 18"

**Bass Drums**

CD 18 B = 18"    CD 20 B = 20"

CD 22 B = 22"    CD 24 B = 24"

**Clear Power - Bass Drum Batter Head**

Edge ring, transparent, single ply, medium

CP 18 B = 18"    CP 20 B = 20"

CP 22 B = 22"    CP 24 B = 24"

**Power Black - Front Head with SONOR Logo**

Edge ring, black, single ply, medium

PB 18 B/L = 18"    PB 20 B/L = 20"

PB 22 B/L = 22"    PB 24 B/L = 24"

**Power White - Front Head with SONOR Logo**

Edge ring, white, coated, single ply, medium

PW 18 B/L = 18"    PW 20 B/L = 20"

PW 22 B/L = 22"    PW 24 B/L = 24"

**Snare Drum Specials - Batter Head**

**Power White\*** - Edge ring, single ply, medium

PW 14 = 14"

**High Tension** - white, single ply, heavy

HT 14 = 14"

**White Heavy\*** - double ply, heavy

WH 10 = 10"    WH 12 = 12"    WH 14 = 14"

**White Double\*** - double ply, XP heavy

WD 10 = 10"    WD 12 = 12"    WD 14 = 14"

\* = white, coated

**Classic** - natural coated, single ply, medium

C 10 = 10"    C 12 = 12"    C 14 = 14"

**Clear Medium Resonanz** - transparent, single ply

CM 10 R = 10"    CM 12 R = 12"

CM 13 R = 13"    CM 14 R = 14"

**Tom Toms | Floor Toms**

CD 08 = 8"    CD 10 = 10"    CD 12 = 12"

CD 13 = 13"    CD 14 = 14"    CD 15 = 15"

CD 16 = 16"    CD 18 = 18"

**Bass Drums**

CD 18 B = 18"    CD 20 B = 20"

CD 22 B = 22"    CD 24 B = 24"

**SONOR Drumsticks**

Select maple and hickory are the basis for manufacturing SONOR drumsticks. Available in a wide range of different shapes and sizes, your choice of wood or nylon tip. Find the right stick to match your personal style!

**Z 5640 Maple Drumsticks**

<b>3A</b>	Slight oval shaped tip, for rock, funk, fusion, length: 40.6 cm / ø 15.1 mm
<b>4</b>	Oval shaped tip, for jazz etc., length: 40.3 cm / ø 13.9 mm
<b>5</b>	Oval shaped tip, all around stick, length: 39.9 cm / ø 14.3 mm
<b>6</b>	Oval shaped tip, all around stick, length: 39.9 cm / ø 15 mm
<b>8</b>	Oval shaped tip, all around stick, length: 41.1 cm / ø 15.5 mm
<b>10</b>	Oval shaped tip, for rock, marching etc., length: 41.1 cm / ø 16.3 mm
<b>FUNK</b>	Small round shaped tip, for funk, jazz, studio, length: 40.6 cm / ø 14.7 mm
<b>CONCERT</b>	Round shaped tip, for concert, marching, rock, length: 41.6 cm / ø 16 mm
<b>PICCOLO</b>	Small round shaped tip, for jazz, studio, concert, length: 40.6 cm / ø 16.3 mm
<b>BLASTER</b>	Triangular shaped tip, all around stick, length: 40.9 cm / ø 15.5 mm

**SONOR Brushes**

<b>Z 5720</b>	Metal Brushes, retractable, Rubber grip
<b>Z 5730</b>	Rute Brushes, when sticks are too loud and regular brushes too soft, with more attack than brushes



**Z 5642 Hickory Drumsticks**

<b>3A</b>	Slight oval shaped tip, for rock, funk, fusion, length: 40.6 cm / ø 15.1 mm
<b>5A</b>	Oval shaped tip, all around stick, length: 40.9 cm / ø 14.3 mm
<b>7A</b>	Oval shaped tip, longer than conventional 7A sticks, for jazz etc., length: 40.3 cm / ø 13.5 mm
<b>5B</b>	Oval shaped tip, for rock, marching, (ideal for rudiments), length: 41.2 cm / ø 15.5 mm
<b>JAZZ</b>	Oval shaped tip, longer than conventional sized sticks, for jazz etc., length: 40.3 cm / ø 13.9 mm
<b>ROCK</b>	Oval shaped tip, for rock etc., length: 41.2 cm / ø 14.3 mm
<b>2B</b>	Oval shaped tip, for marching and rock, length: 40.6 cm / ø 16.3 mm
<b>FUNK</b>	Small round shaped tip, for funk, jazz, studio, length: 40.6 cm / ø 14.7 mm
<b>PERFORMANCE</b>	Triangular shaped tip, all around stick, length: 40.6 cm / ø 14.2 mm
<b>RECORDING</b>	Slight oval shaped tip, for studio, fusion, jazz, length: 40.3 cm / ø 13.5 mm

**Z 5643 Hickory Nylon Tip Drumsticks**

<b>5AN</b>	Nylon tip, shape as 5A model, length: 41.2 cm / ø 14.3 mm
<b>7AN</b>	Nylon tip, shape as 7A model, length: 40.6 cm / ø 13.5 mm
<b>5BN</b>	Nylon tip, shape as 5B model, length: 41.2 cm / ø 15.5 mm



# DRUMBAGS & CASES



## SONOR Global Bags

These bags are made of tough, durable nylon and available as complete sets or single bags. They offer good protection and great looks for drums and accessories.



## Global Bags Sets

<b>GB S</b>	22 BD, 14 SD, 12 TT, 13 TT, 16 FT
<b>GB Stage 2</b>	22 BD, 10 TT, 12 TT, 14 FT
<b>GB Studio</b>	20 BD, 10 TT, 12 TT, 14 FT

## Global Bags for Bass Drums

<b>GB B 18</b>	Bag for a 18" x 16" Bass Drum
<b>GB B 20</b>	Bag for a 20" x 17.5" Bass Drum
<b>GB B 22</b>	Bag for a 22" x 17.5" Bass Drum
<b>GB B 24</b>	Bag for a 24" x 17.5" Bass Drum

## Global Bags for Snare Drums

<b>GB S 1404</b>	Bag for a 14" x 4.5" Snare Drum
<b>GB S 1405</b>	Bag for a 14" x 5.5" Snare Drum
<b>GB S 1406</b>	Bag for a 14" x 6.5" Snare Drum
<b>GB S 1408</b>	Bag for a 14" x 8" Snare Drum

## Global Bags for Tom Toms

<b>GB T 8</b>	Bag for a 8" x 8" Tom Tom
<b>GB T 10</b>	Bag for a 10" x 9" Tom Tom
<b>GB T 12</b>	Bag for a 12" x 10" Tom Tom
<b>GB T 13</b>	Bag for a 13" x 11" Tom Tom
<b>GB T 14</b>	Bag for a 14" x 12" Tom Tom
<b>GB T 15</b>	Bag for a 15" x 13" Tom Tom
<b>GB T 16</b>	Bag for a 16" x 14" Tom Tom

## Global Bags for Floor Toms

<b>GB FT 14</b>	Bag for a 14" x 14" Floor Tom
<b>GB FT 16</b>	Bag for a 16" x 16" Floor Tom
<b>GB FT 18</b>	Bag for a 18" x 16" Floor Tom

## Global Bag for Cymbals

<b>GB C 22</b>	Bag for Cymbals up to 22"
----------------	---------------------------

## SONOR Stick Bag

<b>SSB</b>	Stick Bag, professional version
------------	---------------------------------

## Drum Cases Sets

<b>C S 5</b>	22 BD, 14 SD, 12 TT, 13TT, 16 FT
<b>C SF 5</b>	20 BD, 14 SD, 10 TT, 12TT, 14 TT/FT
<b>C SF 5B</b>	22 BD, 14 SD, 10 TT, 12TT, 14 TT/FT

## Drum Cases for Snare Drums

<b>C 14 SDS</b>	Snare Drum Case 14", square, for drums with parallel snare action
<b>C 14 SD</b>	Snare Drum Case 14"
<b>C 14 SNK</b>	SD Case 14", with accessory compartment

## Drum Cases for Tom Toms

<b>C 8 T</b>	Tom Tom Case 8"
<b>C 10 T</b>	Tom Tom Case 10"
<b>C 12 T</b>	Tom Tom Case 12"
<b>C 13 T</b>	Tom Tom Case 13"

## Drum Cases for Tom Toms / Floor Toms

<b>C 14 T/FT</b>	Tom Tom / Floor Tom Case 14"
<b>C 15 T/FT</b>	Tom Tom / Floor Tom Case 15"
<b>C 16 T/FT</b>	Tom Tom / Floor Tom Case 16"

## Drum Case for Bass Drum / Floor Tom

<b>C 18 BD/FT</b>	Bass Drum / Floor Tom Case 18"
-------------------	--------------------------------

## Drum Cases for Bass Drums

<b>C 20 BD</b>	Bass Drum Case 20"
<b>C 22 BD</b>	Bass Drum Case 22"
<b>C 24 BD</b>	Bass Drum Case 24"

## Drum Cases for Hardware / Accessory

<b>C H</b>	Hardware Case, square size, with wheels
<b>C P</b>	Accessory / Bongo Case

## Drum Cases for Cymbals

<b>C 22 C</b>	Cymbal Case up to 22"
---------------	-----------------------

## SONOR Drum Cases

Any drummer logging in miles on the tour bus will appreciate SONOR's quality drum cases. Made in common sizes for drums, percussion instruments and hardware.



# CYMBALS



### Armoni Cymbals

All hand-hammered Armoni Cymbals, made exclusively for SONOR by a traditional Turkish cymbal company, are of B20 Bronze (a Mix of 80% Copper and 20% Tin). The total production process is comprised of traditional handcrafted methods.

After melting and tempering the B20 Bronze, it is rolled into discs then hammered and polished. The intensive hammering process and precise, two-sided lathing method elevate the standard of outstanding performance and value.

### Armoni Sounds

Our Armoni Cymbals deliver fast, lightening-bright sounds and modern response for today's musical styles. Every Drummer looking for new and modern cymbals will find the perfect sound in our new cymbal line.

### Features

- B20 Bronze (80% Copper and 20% Tin)
- Hand hammered
- Made in Turkey
- Brilliant Finish



# ARMONI CYMBALS

**AC SET 1 Armoni Cymbal Set 1**

- AC 14 HH 14" Hi-Hat Cymbal, brillant
- AC 16 C 16" Crash Cymbal, brillant
- AC 20 R 20" Ride Cymbal, brillant  
with Cymbal Bag

**Armoni Series Cymbals**

- AC 14 HH 13" Hi-Hat Cymbal, brillant
- AC 13 HH 14" Hi-Hat Cymbal, brillant

- AC 14 C 14" Crash Cymbal, brillant
- AC 15 C 15" Crash Cymbal, brillant
- AC 16 C 16" Crash Cymbal, brillant
- AC 17 C 17" Crash Cymbal, brillant
- AC 18 C 18" Crash Cymbal, brillant
- AC 19 C 19" Crash Cymbal, brillant

- AC 20 R 20" Ride Cymbal, brillant
- AC 22 R 22" Ride Cymbal, brillant

- AC 08 S 8" Splash Cymbal, brillant
- AC 10 S 10" Splash Cymbal, brillant
- AC 12 S 12" Splash Cymbal, brillant

- AC 14 CH 14" China Cymbal, brillant
- AC 16 CH 16" China Cymbal, brillant
- AC 18 CH 18" China Cymbal, brillant



AC SET 1



AC 22 R

AC 20 R



AC 15 C

AC 13 HH

AC 14 HH



AC 17 C



AC 14 C

AC 18 C

AC 16 C



AC 19 C



AC 14 CH

AC 18 CH

AC 16 CH



AC 08 S

AC 12 S

AC 10 S

# CAST B8 CYMBALS



**Cast B8 Cymbals**

The new SONOR Cast Cymbal Generation is powered by B8 Bronze Alloy to an incomparable and affordable price/performance ratio. The sound can be described as bright, crisp and clean as well as focused, cutting and energetic with wide functional and musical characteristics.

Start with SONOR's Cast B8 Cymbals and you will be impressed of their performance in every occasion.

**CB 8 Set 1**

14" Hi-Hat Cymbals
16" Crash Cymbal
20" Ride Cymbal
incl. Cymbal Bag



[www.sq2-drumsystem.com](http://www.sq2-drumsystem.com)



[www.myspace.com/WeAreSonorDrums](http://www.myspace.com/WeAreSonorDrums)



[www.youtube.com/SonorDrumTube](http://www.youtube.com/SonorDrumTube)

## SONOR ARTISTS

## USA

Marc Anthony > The Fifth  
 Joe Babiak > Independent  
 Mike Bennett > Hillary Duff  
 Tal Bergman > Loreena McKennitt  
 Jason Bowman > Independent  
 Tommy Buckley > Soilent Green  
 Danny Carey > TOOL  
 Tommy Clufetos > Rob Zombie  
 Paul Collier > Angelcorpse  
 Chris Coleman  
 > New Kids on the Block  
 Asoka Compton > Independent  
 Jack De Johnette > Independent  
 Nick Falk > Independent  
 Dave Ferrara > Peter Noone  
 Mike Gerbrandt > Independent  
 Kris Gustafson > Independent  
 Josh Hack > Gravity Burn  
 Aaron Harris > Isis  
 Mark Hernandez > Forbidden  
 Orlando Hernandez > Chayanne  
 Fernando Jaramillo > Independent  
 Glenn Kotche > Wilco  
 Mark Kulvinskis  
 > Dear and the Headlights  
 Rick Leith > One Slack Mind  
 Michael Lasaponara > Nocturnal Me  
 Shannon Leto > 30 Seconds to Mars  
 Samantha Maloney > Chelsea Girls  
 Mike Marsh > Dashboard Confessional  
 Sammy Merendino > Cyndi Lauper  
 John Miceli > Meat Loaf  
 Kevin Murphy > Tonic  
 Lewis Nash > Independent  
 Adam Nussbaum > Independent  
 Keith Pickens > American Dog  
 Rich Redmond > Jason Aldean  
 Sean Reinert > Cynic  
 Derek Roddy > Serpent's Rise  
 Tom Schofield > Soil  
 Jeff Sipe > Trey Anastasio  
 Steve Smith > Vital Information  
 Neal Smith > Independent  
 Dr. Jack Summers > Independent  
 Dave Thaler > Bad Influence  
 Sean Thomas > Independent  
 T. J. Thorn > Independent  
 Ed Udhus > Zebrahead  
 Nathan Walker > Lit  
 Jeff Tain Watts  
 > Brandford Marsalis  
 Joe Winters > Steepwater Band  
 Ron Wikso > Greg Rolie  
 Troy Young > The Spines  
 Charlie Zeleny  
 > Blotted Science/Jordan Rudess

## SWITZERLAND

Julio Barreto > Independent  
 Simon Baumann > One Shot Orchestra  
 Christoph Blattner > RhythmTalk  
 Adrian Christen > Havana del Alma  
 David Elias > Ratkings  
 Jan Fabricky > Independent  
 Urs Frei > Sandee  
 Freddy Frutig > Krokus  
 Tobias Heim > Kummerbuben

Pit Lee Hertig > Da Cruz  
 Peter Kaufmann > George  
 Martin Kissling > Anshelle  
 Matthias Kohli > Mattis Big Beat  
 Noby Lehmann > RhythmTalk  
 Ruedi Maurer > RhythmTalk  
 JoJo Mayer > Nerve  
 Lucas Niggli > Independent  
 Ephraim Salzmann  
 > Stefanie Heinzmann  
 Philipp Schmid > Van Golden  
 Remo Signer > Michael von der Heide  
 Muso Stamm > Marvin  
 Simon Steiner > Redeem  
 Sascha Weber > Setup  
 Thomas Wild  
 > Wolf und die Schmetterband  
 Guido Wyss > Enigmatik

## SWEDEN

Micke Dahlén > Clawfinger  
 Mikkey Dee > Motörhead  
 Tomas Haake > Meshuggah  
 Kicken > The Poodles  
 Gunnar Nilsson > Lasse Stefanz  
 Nicci Notini Wallin > Independent

## FINLAND

Pecu Cinnari > Tarot

## NORWAY

Bjarne Brøndbo > D.D.E.  
 Bjørn Jensen > Dance with a Stranger  
 Bjørn Gunnar Sando > Hellbillies

## NETHERLANDS

René Creemers > Drumbassadors  
 Wim De Vries > Drumbassadors  
 Hans Eijkenaar > Independent  
 John Engels > Independent  
 Mark Eshuis > Independent  
 Arend Niks > Independent  
 George Pelupessy > Independent  
 Sjoerd Rutten > Independent  
 Dave van Beek > Acda en de Munnink  
 Juan van Emmerloot > Independent  
 Stephen van Haestregt > Within  
 Temptation, My Favorite Scar  
 Hans Van Oosterhout > Independent  
 Ed Warby > Hail of Bullets

## BELGIUM

Jan Cuyvers > Soulsister  
 Philippe Mobergs > Independent

## JAPAN

Jun Aoyama > Independent  
 Masao Fukunaga > Independent  
 Genta > Independent  
 Naoya Hamada > Independent  
 Osamu Jinguji > Remioromen  
 Kou > Pe'Z  
 Masaaki Tamaki > Independent  
 Yutaka Watanabe > Independent  
 Hideo Yamaki > Independent  
 Gota Yashiki > Gota/Simply Red

## ITALY

Maurizio Antonini > Independent  
 Tony Arco > Independent  
 Mariano Barba > Independent  
 Andrea Beccaro > Independent  
 Lele Boria > Independent  
 Gianni Caltran > Independent  
 Daniele Chiantese > Independent  
 Giancarlo Cornetta > Velvet  
 Francesco Corvino > Session  
 Ignazio Di Fresco > Educator  
 Luciano Galloni > Nek  
 Andrea Ge > Queenmania  
 Alex Giordani > Independent  
 Loris Luppino > Marco Carta  
 Claudio Mastracci > Independent  
 Cristian Montanarella > Linea 77  
 Gigi Morello > Educator  
 Alex Napolitano > Independent  
 Sergio Pescara > Independent  
 Giorgio Prette > Afterhours

## FRANCE

Mickaël Boudoux > Independent  
 Frederic Degré > Independent  
 Claude Gastaldin > Independent  
 Jo Hammer > Independent  
 Marc Jacquemin > Independent  
 Christian Monthieux > Independent  
 Laurent Robin > Independent  
 Paco Sery > Independent  
 Maxime Zampieri > Magic Malik

## CANADA

Dan Cornelius > Danko Jones  
 Sean Dalton > The Trews  
 Davide DiRenzo > Independent  
 Chuck Keeping > Suzie McNeil  
 Sean Kilbride > Toxic Avenger  
 Dave Langguth > Nelly Furtado  
 Chad Melchert > Adam Gregory  
 Anthony Michelli > Independent  
 Chris Sutherland > Kim Mitchell  
 Denton Whited > Philosopher Kings

## AUSTRALIA

Joe Accaria > David Campbell  
 Nicky Bomba > John Butler Trio  
 Yanya Boston > Independent  
 Jeff De Araujo > Sarah Blasko  
 Ben Hall > The Butterfly Effect  
 Kevin Nicol > Noiseworks  
 Mark Marriot > The Footy Show  
 Damien Petrilli > Independent  
 Evan Yako > Recording Artist

## GERMANY

Stephan Emig > Triosence  
 Benny Greb > Jerobeam/Stopok  
 Carola Grey > Noisy Mama  
 Eike Herwig > Donots  
 Holger Hälbig > Big Band der BW  
 Sebastian Krajewski  
 > Seed/Peter Fox  
 Thomas Lieven > Big Band der BW  
 Sascha Madsen > Madsen  
 Rudi Marhold > Götz Alsmann  
 Matthias Neuburger > Slut

Jost Nickel > Jan Delay  
 Andreas Nowak > Silbermond  
 Dennis Poschwatta > Guano Apes  
 Pola Roy > Wir sind Helden  
 Christoph Schneider > Rammstein  
 Michael Wolpers > Soul Doctor

## AUSTRIA

Reinhard Schwarzwinger > Independ.  
 Patrick Cox > Independent  
 Thomas Lang > Independent  
 Christian Lettner  
 > Basic Jazz Lounge

## CHINA

Guan Fei > Wang Feng Band  
 Liu Gang > C.C.O.M.  
 Lu Xun > Zi yue Band  
 Zheng Zhao Hui > Compass Band

## NEW ZEALAND

Patrick Kuitze > Kick  
 Phil Rudd > AC/DC

## UNITED KINGDOM

Steve Alexander > Independent  
 Nick Barker > Independent  
 Richard Bailey > Incognito  
 Ian Bayne > Runrig  
 Rob Brian > Siouxsie Sioux  
 Rocky Bryant > Average White Band  
 Gene Calderazzo > Independent  
 Joe Crabbtree > Wishbone Ash  
 Danny Cummings > Mark Knopfler  
 Blair Cunningham > Westernhagen  
 Joe Crabbtree > Wishbone Ash  
 Guy Davis > Reuben  
 Dave DeRose > Moloko/Roisin Murphy  
 Martin Ditcham > Westernhagen  
 Steve Grice > Onslaught  
 Gavin Harrison > Porcupine Tree  
 Ryan Jenkinson > Skeletons and the  
 Empty Pockets  
 Martin "Magic" Johnson > Bewitched  
 Jan Kincaid > Brand New Heavies  
 Vinnie Lammì > Mel C/Spice Girls  
 Dafydd Leuan > Super Furry Animals  
 John Marshall > Soft Machine Legacy  
 Perry Melius > Tricky / Aswad  
 Brandon O'Neill > Nine Below Zero  
 Chris Jungle Polglase > Independent  
 Alex Reeves > Dizzee Rascal  
 Seb Rockford  
 > Polar Bear, Acoustic Ladyland  
 Arnaldo Rogano - Cavalari  
 Rocky Singh > Asian Dub Foundation  
 Henry Spinetti > Katie Melua  
 Richard Thair > Red Snapper  
 Alex Toff > Jack McManus  
 Dave Werner > Badly Drawn Boy  
 Paul Walsham  
 > Barclay James Harvest  
 Colin Woolway > Independent

... and many more!